

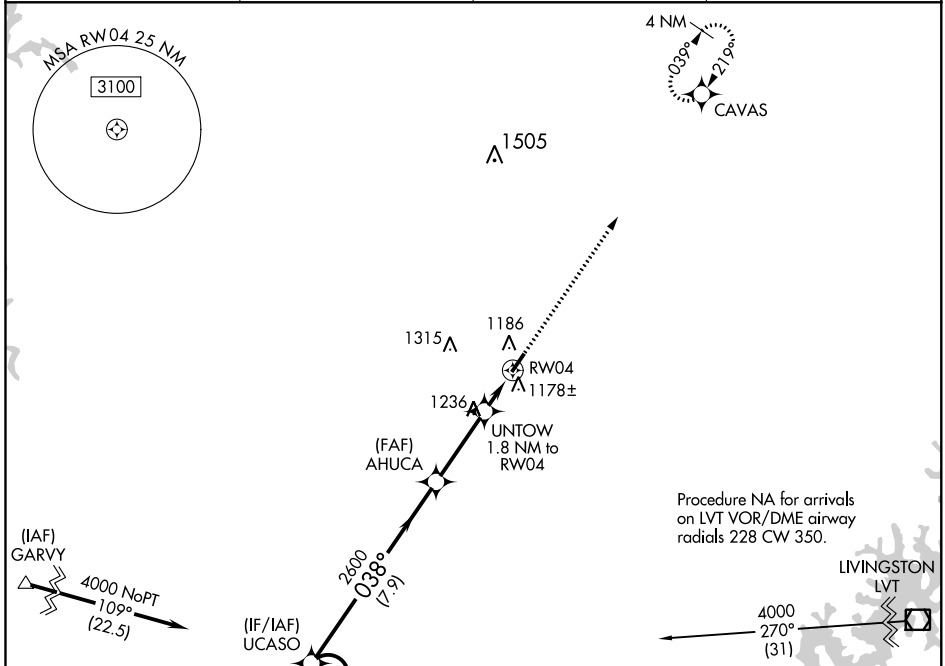
# RNAV (GPS) RWY 4

TOMPKINSVILLE-MONROE COUNTY (T'ZV)

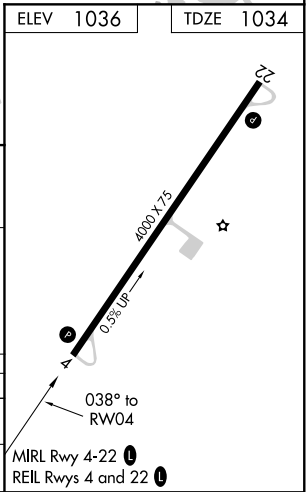
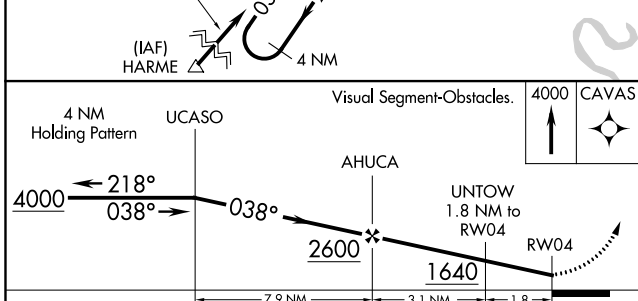
APP CRS <b>038°</b>	Rwy Idg <b>4000</b>
	TDZE <b>1034</b>
	Apt Elev <b>1036</b>

<p><b>▽</b> DME/DME RNP-0.3 NA.  <b>△</b> NA Helicopter visibility reduction below 1 SM NA.                  Night landing: Rwy 4 NA.                  Use Glasgow altimeter setting.</p>	<p>MISSED APPROACH: Climb to 4000 direct CAVAS and hold.</p>
---	--

<p>AWOS-AV <b>123.050</b></p>	<p>GLASGOW MUNI AWOS-3 <b>118.525</b></p>	<p>MEMPHIS CENTER <b>132.9 263.1</b></p>	<p>UNICOM <b>123.05 (CTAF) 0</b></p>
-----------------------------------	---	--	--



ELEV 1036	TDZE 1034
-----------	-----------



CATEGORY	A	B	C	D
LNVA MDA	1540-1	506 (600-1)	1540-1 3/8 506 (600-1 3/8)	NA
<b>C</b> CIRCLING	1640-1 604 (700-1)	1800-1 764 (800-1)	1840-2 1/4 804 (900-2 1/4)	NA

SE-1, 15 AUG 2019 to 12 SEP 2019

SE-1, 15 AUG 2019 to 12 SEP 2019