

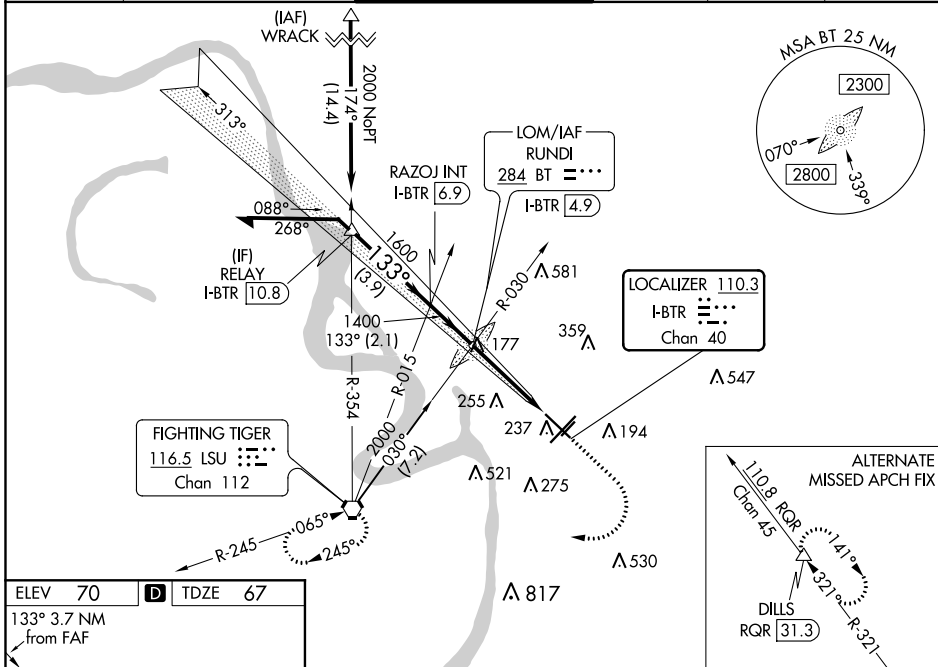
LOC/DME I-BTR <b>110.3</b> Chan <b>40</b>	APP CRS <b>133°</b>	Rwy Idg <b>6408</b> TDZE <b>67</b> Apt Elev <b>70</b>
---	------------------------	---

# ILS or LOC RWY 13

BATON ROUGE METROPOLITAN, RYAN FIELD (BTR)

<p><b>ASR</b></p>	<p>For inop MALS/R when using Hammond altimeter setting, increase S-ILS 13 all Cats visibility to 3/8 mile, and S-LOC 13 visibility to 1 1/8 mile. VDP NA with Hammond altimeter setting. When local altimeter setting not received, use Hammond altimeter setting and increase all DA 91 feet and all MDA 100 feet, increase S-LOC 13 Cats C and D visibility 1/4 mile, increase Circling Cats C and D visibility 1/4 mile. For inop MALS/R, increase S-LOC 13 Cats C and D to 1 1/8 mile.</p>	<p><b>MALS/R</b></p>	<p><b>MISSED APPROACH:</b> Climb to 700 then climbing right then to 2000 direct LSU VORTAC and hold.</p>
-------------------	---	----------------------	--

ATIS <b>125.2</b>	BATON ROUGE APP CON * <b>120.3 278.3</b>	RYAN TOWER * <b>118.45 (CTAF) 257.8</b>	GND CON <b>121.9</b>	CLNC DEL <b>119.4</b>	UNICOM <b>122.95</b>
----------------------	---	--	-------------------------	--------------------------	-------------------------



ELEV 70	D	TDZE 67
133° 3.7 NM from FAF		
TDZ/CL Rwy 22R HIRL Rwys 13-31 and 4L-22R MIRL Rwy 4R-22L		
FAF to MAP 3.7 NM		
Knots	60	90 120 150 180
Min:Sec	3:42 2:28	1:51 1:29 1:14

RUNDI LOM/INT I-BTR (4.9) RAZOJ INT I-BTR (6.9) GS 3.00° TCH 57	700	2000	LSU
	*LOC only. Use I-BTR DME when on the localizer course.		
CATEGORY	A	B	C D
S-ILS 13	267-1/2		200 (200-1/2)
S-LOC 13	480-1/2	413 (500-1/2)	480-3/4 413 (500-3/4)
CIRCLING	560-1	660-1	780-2 840-2 1/2
	490 (500-1)	590 (600-1)	710 (800-2) 770 (800-2 1/2)

# ILS or LOC RWY 13

SC-4, 12 SEP 2019 to 10 OCT 2019

SC-4, 12 SEP 2019 to 10 OCT 2019