

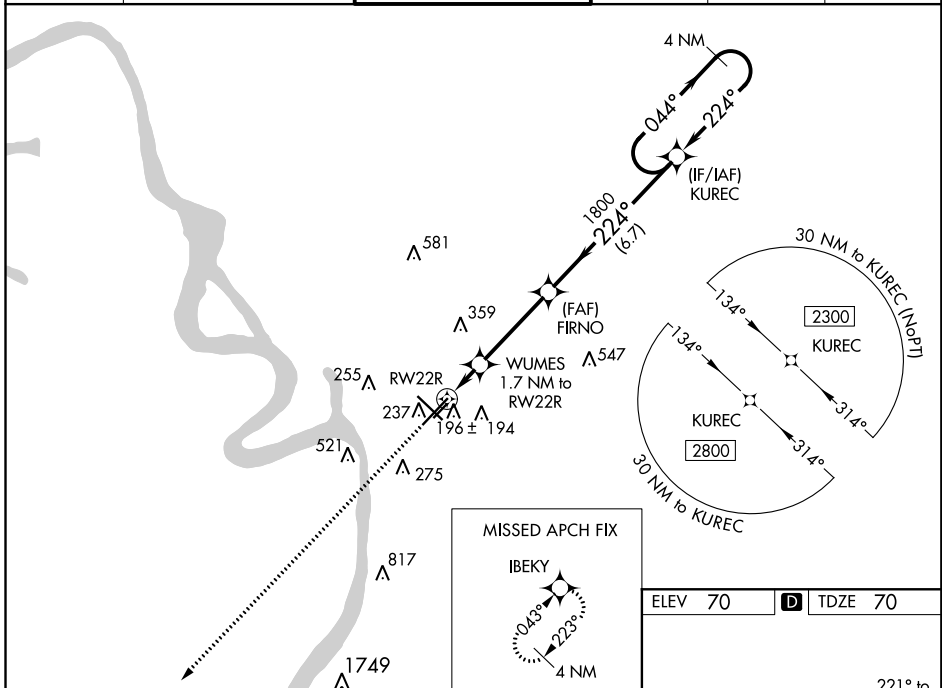
WAAS CH <b>86225</b> <b>W22A</b>	APP CRS <b>224°</b>	Rwy Idg <b>7500</b> TDZE <b>70</b> Apt Elev <b>70</b>
--	------------------------	---

# RNAV (GPS) RWY 22R

BATON ROUGE METROPOLITAN, RYAN FIELD (BTR)

<p><b>▲</b> Baro-VNAV NA when using Hammond altimeter setting. For uncompensated Baro-VNAV systems, LNAV/VNAV NA below -5°C (23°F) or above 54°C (130°F). DME/DME RNP-0.3 NA. VDP NA with Hammond altimeter setting. When local altimeter setting not received, use Hammond altimeter setting and increase all DA 91 feet, and all MDA 100 feet; increase LNAV/VNAV all Cats visibility 3/8 mile, LNAV Cat C/D visibility to RVR 5000, and Circling Cat C/D visibility 1/4 mile. For inop MALS R when using Hammond altimeter setting, increase LPV all Cats visibility to RVR 4500, and LNAV C/D visibility to 1 1/8 mile.</p>	<p>MALS R</p>	<p><b>MISSED APPROACH:</b> Climb to 2800 direct IBEKY and hold.</p>
	<p><b>ASR</b></p>	

ATIS <b>125.2</b>	BATON ROUGE APP CON* <b>120.3 278.3</b>	RYAN TOWER* <b>118.45 (CTAF) 0 257.8</b>	GND CON <b>121.9</b>	CLNC DEL <b>119.4</b>	UNICOM <b>122.95</b>
----------------------	--	---	-------------------------	--------------------------	-------------------------



<p>2800</p> <p>IBEKY</p> <p>*LNAV only.</p> <p>WUMES *1.1 NM to RW22R</p> <p>FIRNO 1800</p> <p>1800</p> <p>660</p> <p>1800</p> <p>1.1 0.6 3.6 NM 6.7 NM</p>	<p>4 NM Holding Pattern</p> <p>KUREC</p> <p>2300</p> <p>GP 3.00°</p> <p>TCH 55</p>
CATEGORY	A B C D
LPV DA	270/18 200 (200-1/2)
LNAV/VNAV DA	486/45 416 (500-7/8)
LNAV MDA	460/24 390 (400-1/2) 460/35 390 (400-3/8)
<b>C</b> CIRCLING	560-1 490 (500-1) 660-1 590 (600-1) 780-2 710 (800-2) 840-2 1/2 770 (800-2 1/2)

ELEV 70	<b>D</b> TDZE 70
---------	------------------

221° to RW22R

228

222

221

220

219

218

217

216

215

214

213

212

211

210

209

208

207

206

205

204

203

202

201

200

199

198

197

196

195

194

193

192

191

190

189

188

187

186

185

184

183

182

181

180

179

178

177

176

175

174

173

172

171

170

169

168

167

166

165

164

163

162

161

160

159

158

157

156

155

154

153

152

151

150

149

148

147

146

145

144

143

142

141

140

139

138

137

136

135

134

133

132

131

130

129

128

127

126

125

124

123

122

121

120

119

118

117

116

115

114

113

112

111

110

109

108

107

106

105

104

103

102

101

100

99

98

97

96

95

94

93

92

91

90

89

88

87

86

85

84

83

82

81

80

79

78

77

76

75

74

73

72

71

70

69

68

67

66

65

64

63

62

61

60

59

58

57

56

55

54

53

52

51

50

49

48

47

46

45

44

43

42

41

40

39

38

37

36

35

34

33

32

31

30

29

28

27

26

25

24

23

22

21

20

19

18

17

16

15

14

13

12

11

10

9

8

7

6

5

4

3

2

1

0

TWR 185

TDZ/CL Rwy 22R

HIRL Rwy 13-31 and 4L-22R

MIRL Rwy 4R-22L

SC-4, 12 SEP 2019 to 10 OCT 2019

SC-4, 12 SEP 2019 to 10 OCT 2019