

VOR RWY 4L

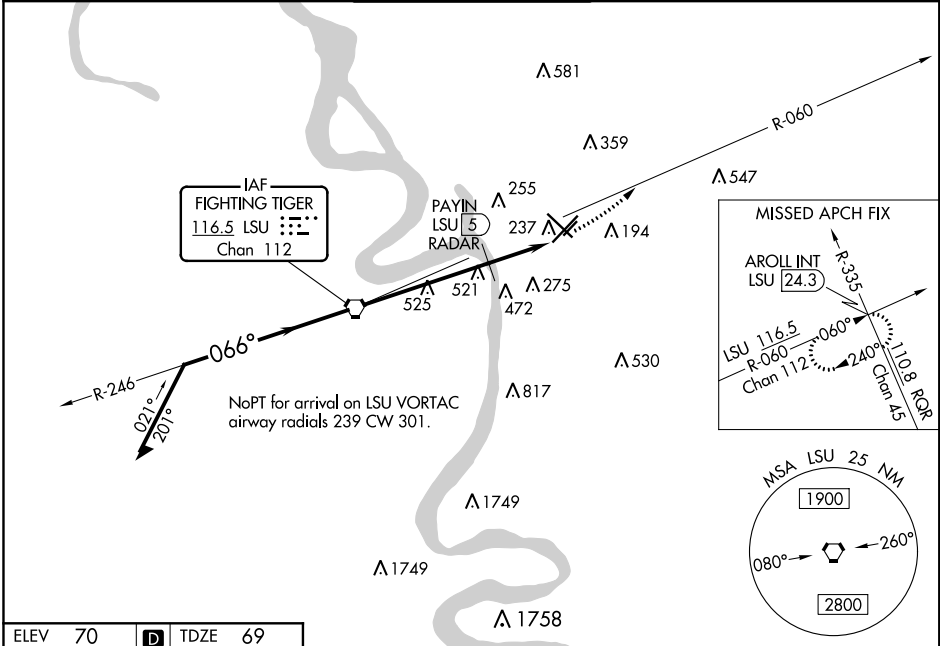
BATON ROUGE METROPOLITAN, RYAN FIELD (BTR)

VORTAC LSU 116.5	APP CRS 066°	Rwy Idg 7500 TDZE 69 Apt Elev 70
Chan 112		

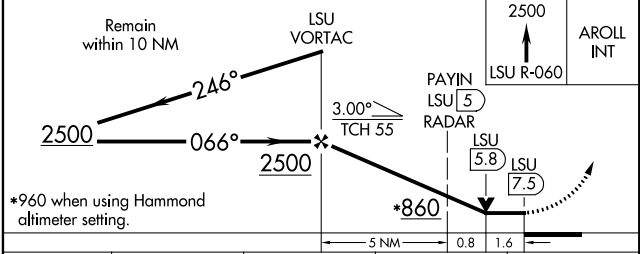
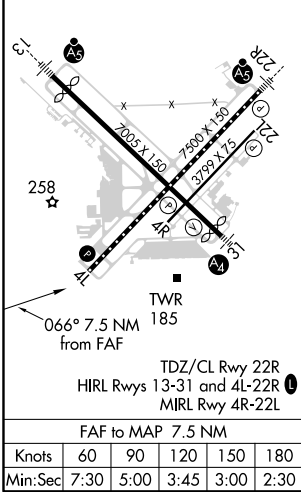
⚠ ASR Helicopter visibility reduction below $\frac{3}{4}$ SM NA. When local altimeter setting not received, use Hammond altimeter setting and increase all MDA 100 feet, increase S-4L Cat A and Circling Cat A and Cat C visibility $\frac{1}{4}$ mile and Circling Cat D visibility $\frac{1}{2}$ mile, PAYIN Fix Minimums: increase S-4L Cats C/D and Circling Cats C/D visibility $\frac{1}{4}$ mile. VDP NA when using Hammond altimeter setting.

MISSED APPROACH: Climb to 2500 on LSU VORTAC R-060 to AROLL INT/LSU 24.3 DME and hold.

ATIS 125.2	BATON ROUGE APP CON ★ 120.3 278.3	RYAN TOWER ★ 118.45 (CTAF) 257.8	GND CON 121.9	CLNC DEL 119.4	UNICOM 122.95
----------------------	---	--	-------------------------	--------------------------	-------------------------



ELEV 70	D	TDZE 69
----------------	----------	----------------



CATEGORY	A	B	C	D
S-4L	860-1 791 (800-1)	860-1 $\frac{1}{4}$ 791 (800-1 $\frac{1}{4}$)	860-2 $\frac{1}{2}$	791 (800-2 $\frac{1}{2}$)
C CIRCLING	860-1 790 (800-1)	860-1 $\frac{1}{4}$ 790 (800-1 $\frac{1}{4}$)	860-2 $\frac{1}{2}$	790 (800-2 $\frac{1}{2}$)

PAYIN FIX MINIMUMS				
S-4L	640-1	571 (600-1)	640-1 $\frac{5}{8}$	571 (600-1 $\frac{5}{8}$)
C CIRCLING	640-1 570 (600-1)	660-1 590 (600-1)	780-2 710 (800-2)	840-2 $\frac{1}{2}$ 770 (800-2 $\frac{1}{2}$)

VOR RWY 4L