

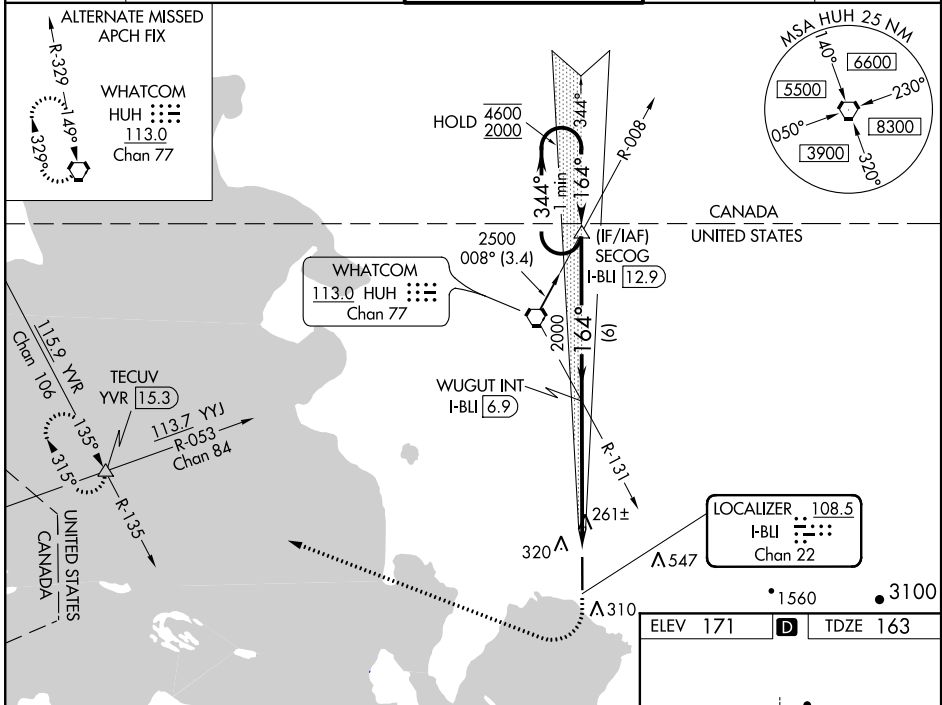
LOC/DME I-BLI <b>108.5</b> Chan 22	APP CRS <b>164°</b>	Rwy Idg TDZE Apt Elev <b>6700</b> <b>163</b> <b>171</b>
--	------------------------	--

# ILS RWY 16 (SA CAT I)

BELLINGHAM INTL (BLI)

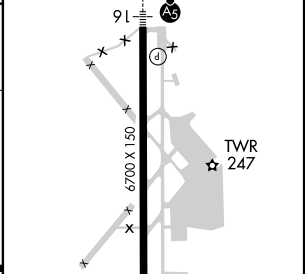
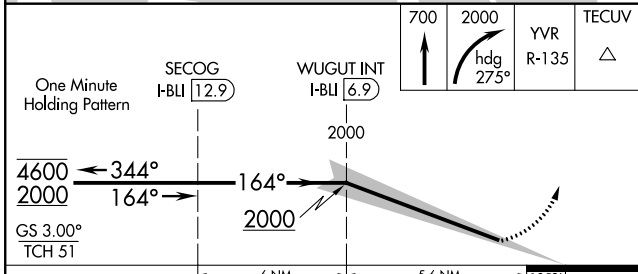
DME or RADAR required.		MALSRS 	MISSED APPROACH: Climb to 700 then climbing right turn to 2000 on heading 275° and on YVR VOR/DME R-135 to TECUV INT/YVR 15.3 DME and hold.
Requires specific OPSPEC, MSPEC or LOA approval and use of HUD to DH.			

ATIS <b>134.45</b>	VICTORIA TERMINAL APP CON <b>132.7 290.8</b>	BELLINGHAM TOWER ★ <b>124.9 (CTAF) 379.3</b>	GND CON <b>127.4 379.3</b>	UNICOM <b>122.95</b>
-----------------------	---	---	-------------------------------	-------------------------



NW-1, 12 SEP 2019 to 10 OCT 2019

NW-1, 12 SEP 2019 to 10 OCT 2019



CATEGORY	A	B	C	D
S-ILS 16	RA 244/14 150 DA 313			

**SA CATEGORY I ILS-SPECIAL AIRCREW & AIRCRAFT CERTIFICATION REQUIRED**

ELEV 171	D	TDZE 163
REIL Rwy 34		HIRL Rwy 16-34