

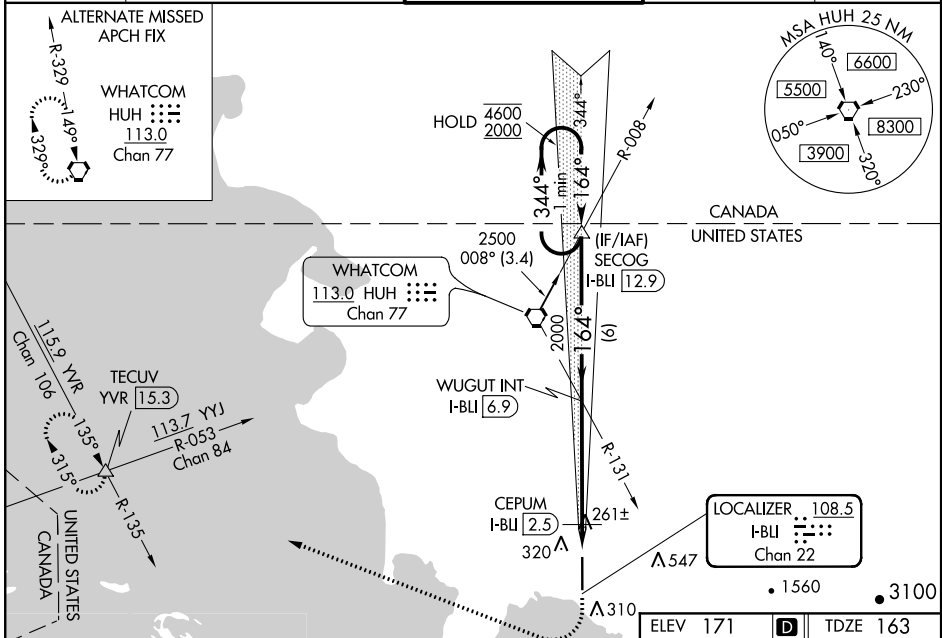
LOC/DME I-BLI 108.5 Chan 22	APP CRS 164°	Rwy Idg TDZE Apt Elev	6700 163 171
--	------------------------	-----------------------------	---

ILS or LOC RWY 16

BELLINGHAM INTL (BLI)

DME or RADAR required.		MALSR	MISSED APPROACH: Climb to 700 then climbing right turn to 2000 on heading 275° and on YVR VOR/DME R-135 to TECUV INT/YVR 15.3 DME and hold.
<p>▲ For inop ALS, increase S-LOC Cat C/D visibility to RVR 6000 and CEPUM fix minimums S-LOC 16 Cat C/D to RVR 5500. # RVR 1800 authorized with use of FD or AP or HUD to DA.</p>		AS	

ATIS 134.45	VICTORIA TERMINAL APP CON 132.7 290.8	BELLINGHAM TOWER ★ 124.9 (CTAF) 379.3	GND CON 127.4 379.3	UNICOM 122.95
-----------------------	---	---	-------------------------------	-------------------------



One Minute Holding Pattern	SECOG I-BLI 12.9	WUGUT INT I-BLI 6.9	YVR R-135	TECUV
4600 2000	344° 164°	2000	hdg 275°	△
GS 3.00° TCH 51	164°	2000	*LOC only	
	6 NM	4.4 NM	1.2 NM	
CATEGORY	A	B	C	D
S-ILS 16 #	363/24 200 (200-½)			
S-LOC 16	580/24	417 (500-½)	580/40	417 (500-¾)
CIRCLING	640-1	469 (500-1)	900-2 729 (800-2)	1160-3 989 (1000-3)
CEPUM FIX MINIMUMS (DME REQUIRED)				
S-LOC 16	520/24	357 (400-½)	520/30	357 (400-¾)
CIRCLING	640-1	469 (500-1)	900-2 729 (800-2)	1160-3 989 (1000-3)

ELEV 171	TDZE 163
164° 5.6 NM from FAF	91' AS
TWR 247	6700 X 1.50
REIL Rwy 34	34
HIRL Rwy 16-34	
FAF to MAP 5.6 NM	
Knots	60 90 120 150 180
Min:Sec	5:36 3:44 2:48 2:14 1:52

NW-1, 12 SEP 2019 to 10 OCT 2019

NW-1, 12 SEP 2019 to 10 OCT 2019