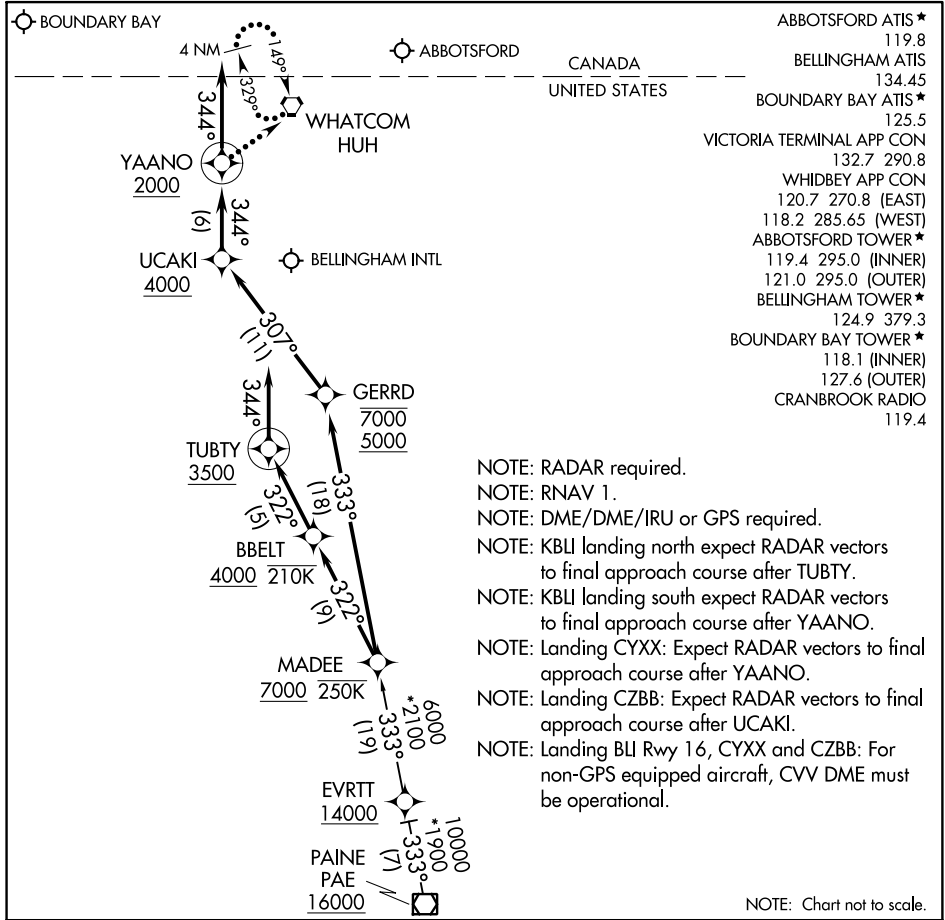


(MADEE.MADEE4) 17061

MADEE FOUR ARRIVAL (RNAV)

ST-45 (FAA)

BELLINGHAM, WASHINGTON



NW-1, 12 SEP 2019 to 10 OCT 2019

NW-1, 12 SEP 2019 to 10 OCT 2019

NOTE: Chart not to scale.

ARRIVAL ROUTE DESCRIPTION

PAINE TRANSITION (PAE.MADEE4)

LANDING BLI RUNWAY 16: From MADEE on track 333° to cross GERRD between 5000 and 7000, then on track 307° to cross UCAKI at or above 4000, then on track 344° to cross YAANO at or above 2000, then on track 344°. Expect RADAR vectors to final approach course.

LANDING BLI RUNWAY 34: From MADEE on track 322° to cross BBELT at or above 4000 and at or below 210K, then on track 322° to cross TUBTY at or above 3500, then on track 344°. Expect RADAR vectors to final approach course.

LANDING CYXX/CZBB: From MADEE on track 333° to cross GERRD between 5000 and 7000, then on track 307° to cross UCAKI at or above 4000, then on track 344° to cross YAANO at or above 2000, then on track 344°. Expect RADAR vectors to final approach course.

LOST COMMUNICATIONS

LANDING BLI RUNWAY 16, CYXX, and CZBB: After YAANO proceed direct HUH and hold.

LANDING BLI RUNWAY 34: After TUBTY execute RNAV (GPS) Y RWY 34 approach.

MADEE FOUR ARRIVAL (RNAV)

BELLINGHAM, WASHINGTON

(MADEE.MADEE4) 02MAR17