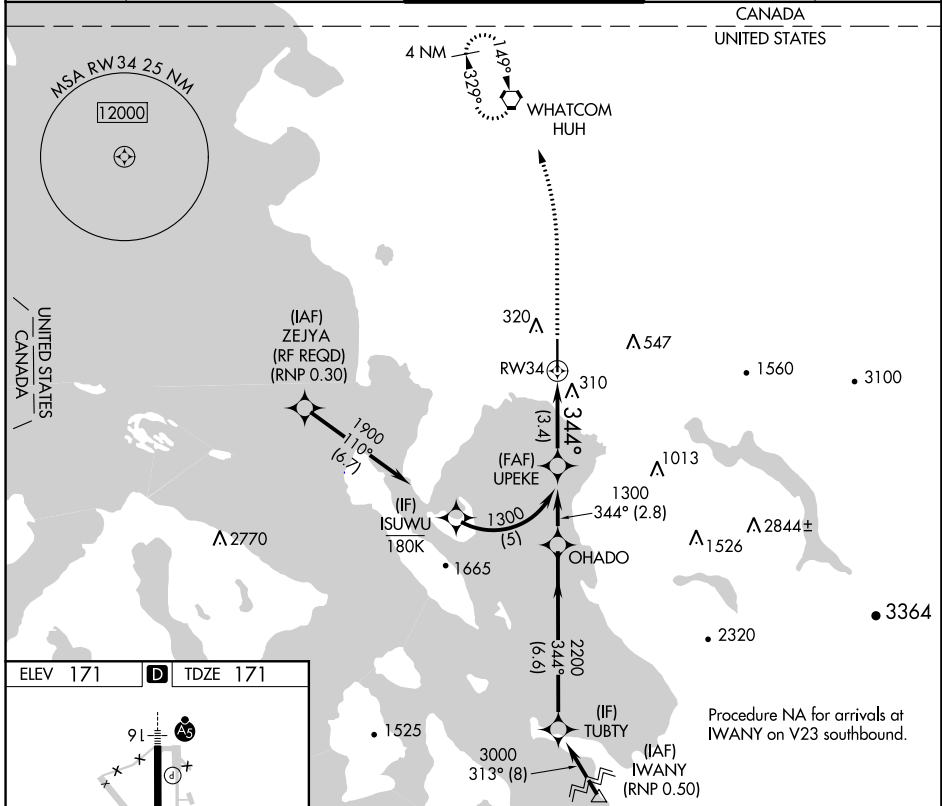


APP CRS	Rwy Idg	<b>6700</b>
<b>344°</b>	TDZE	<b>171</b>
	Apt Elev	<b>171</b>

# RNAV (RNP) Z RWY 34

BELLINGHAM INTL (BLI)

RNP AR APCH.		MISSED APPROACH: Climb to 700 then climbing left turn to 3000 direct WHATCOM VORTAC and hold, continue climb-in-hold to 3000.	
For uncompensated Baro-VNAV systems, procedure NA below -10°C or above 54°C.			
ATIS	VICTORIA TERMINAL APP CON	BELLINGHAM TOWER ★	UNICOM
<b>134.45</b>	<b>132.7 290.8</b>	<b>124.9 (CTAF) 0 379.3</b>	<b>127.4 379.3</b>



## AUTHORIZATION REQUIRED

NW-1, 12 SEP 2019 to 10 OCT 2019

NW-1, 12 SEP 2019 to 10 OCT 2019