

RNAV (GPS) RWY 31

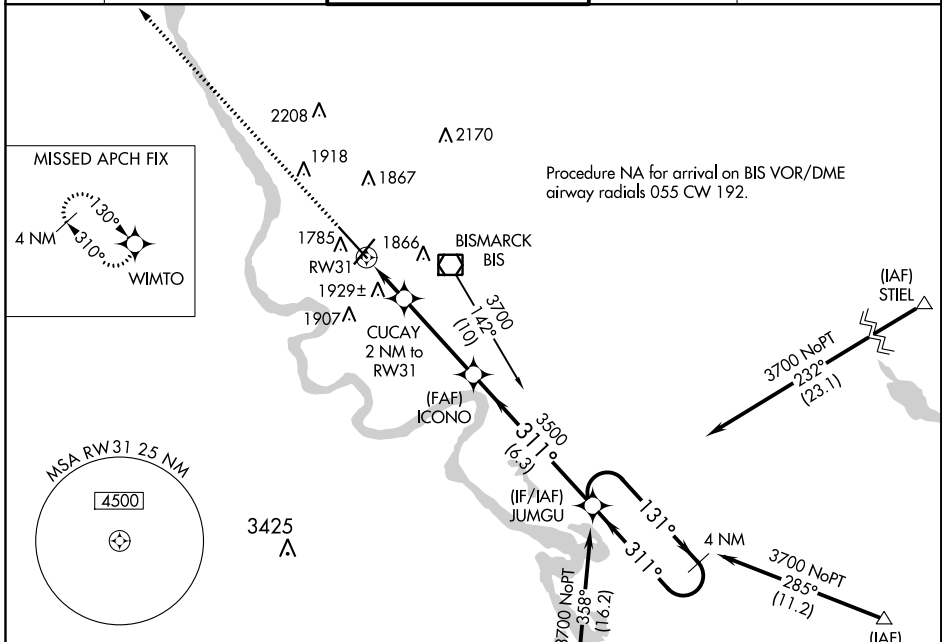
BISMARCK MUNI (BIS)

WAAS CH 56599 W31A	APP CRS 311°	Rwy Idg TDZE Apt Elev	8794 1645 1661
---------------------------------	------------------------	-----------------------------	---

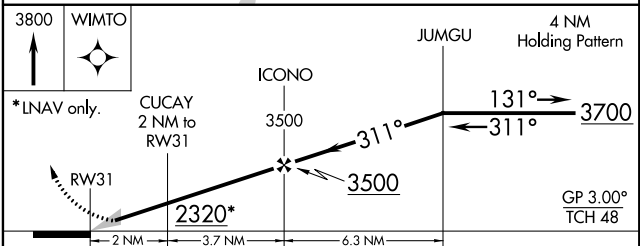
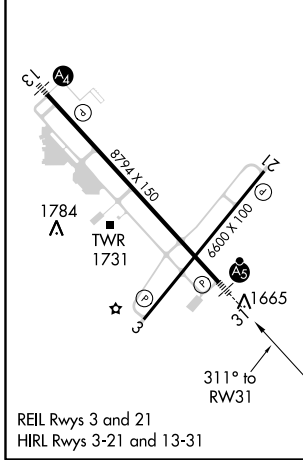
ASR For uncompensated Baro-VNAV systems, LNAV/VNAV NA below -18°C (0°F) or above 33°C (91°F). DME/DME RNP-0.3 NA. **-35°C** ** RVR 1800 authorized with use of FD or AP or HUD to DA.

MALSR MISSED APPROACH: Climb to 3800 direct WIMTO and hold.

ATIS 119.35	BISMARCK APP CON* 126.3 298.9	BISMARCK TOWER* 118.3 (CTAF) 0 257.8	GND CON 121.9	UNICOM 122.95
-----------------------	---	---	-------------------------	-------------------------



ELEV 1661	D	TDZE 1645
-----------	----------	-----------



CATEGORY	A	B	C	D
LPV DA	1845/24 200 (200-1/2)			
LNAV/VNAV DA	2269-1 3/4 624 (700-1 3/4)			
LNAV MDA	2180/24	535 (600-1/2)	2180/55	535 (600-1)
CIRCLING	2240-1	579 (600-1)	2240-1 1/2 579 (600-1 1/2)	2320-2 659 (700-2)

NC-1, 12 SEP 2019 to 10 OCT 2019

NC-1, 12 SEP 2019 to 10 OCT 2019