

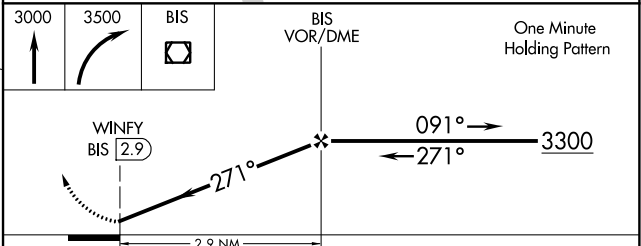
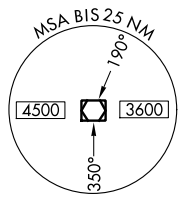
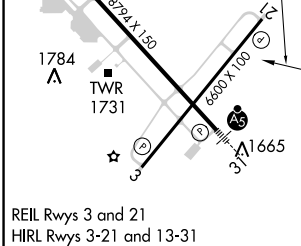
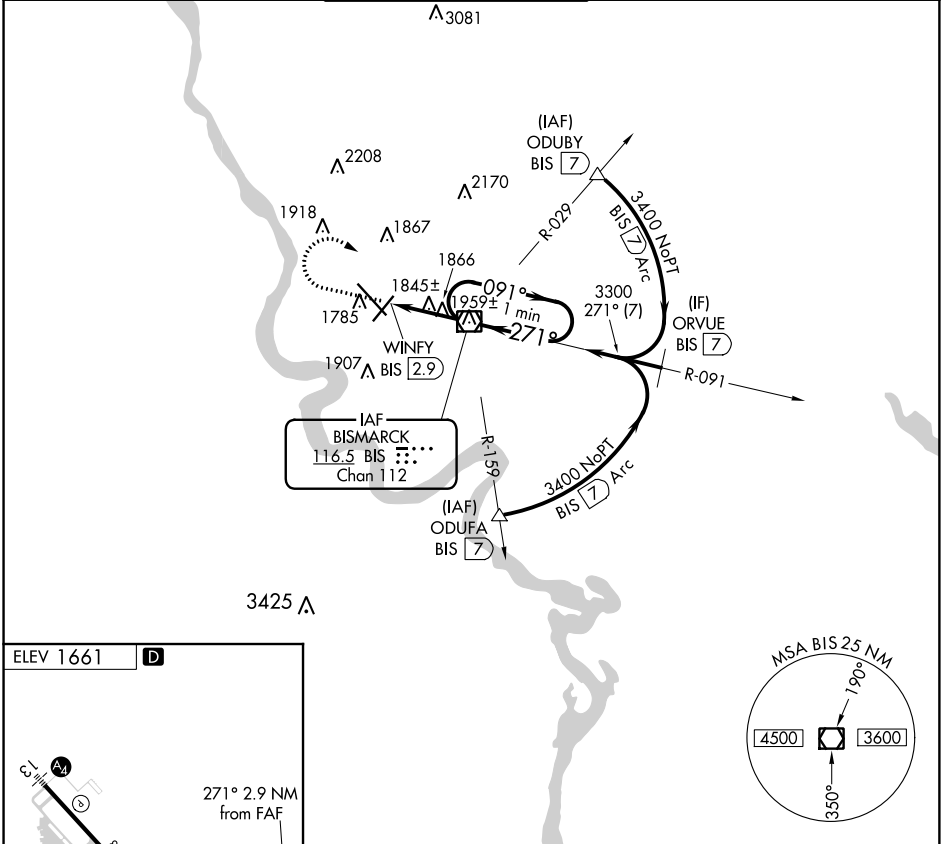
VOR/DME BIS 116.5 Chan 112	APP CRS 271°	Rwy Ldg TDZE Apt Elev N/A N/A 1661
--	------------------------	--

VOR-A
BISMARCK MUNI (BIS)

ASR
-35°C

MISSED APPROACH: Climb to 3000 then climbing right turn to 3500 direct BIS VOR/DME and hold.

ATIS 119.35	BISMARCK APP CON * 126.3 298.9	BISMARCK TOWER * 118.3 (CTAF) 257.8	GND CON 121.9	UNICOM 122.95
-----------------------	--	---	-------------------------	-------------------------



FAF to MAP 2.9 NM					
Knots	60	90	120	150	180
Min:Sec	2:54	1:56	1:27	1:10	0:58
CATEGORY	A		B		
CIRCLING	2240-1		579 (600-1)		2240-1½ 579 (600-1½)
					2320-2 659 (700-2)

NC-1, 12 SEP 2019 to 10 OCT 2019

NC-1, 12 SEP 2019 to 10 OCT 2019