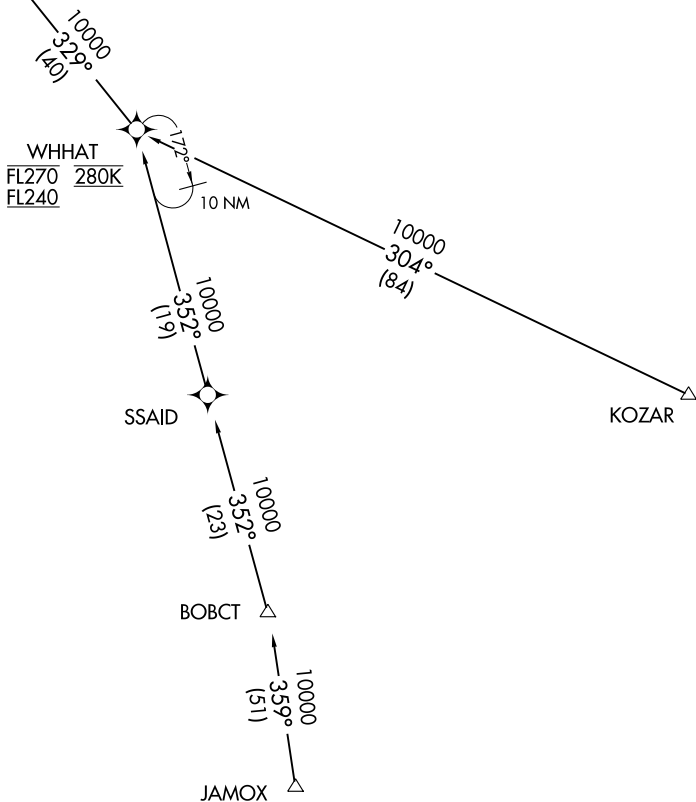
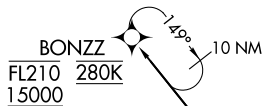


BONZZ ONE ARRIVAL (RNAV) Transition Routes

D-ATIS  
133.675  
DETROIT APP CON  
126.225 284.0

- NOTE: RADAR required.
- NOTE: RNAV 1
- NOTE: DME/DME/IRU or GPS required.
- NOTE: Use Rwy 21L transition or as assigned by ATC. Expect Rwy assignment from Detroit TRACON prior to TMBIT.
- NOTE: Jet aircraft descend via Mach number until intercepting 280K. Maintain 280K until slowed by the STAR.
- NOTE: For use when DTW is in south flow. When DTW is in north flow, file and expect the KLYNK RNAV STAR.

See following page for arrival route



NOTE: Chart not to scale.

JAMOX TRANSITION (JAMOX.BONZZ1)  
KOZAR TRANSITION (KOZAR.BONZZ1)

(CONTINUED ON FOLLOWING PAGE)

EC-1, 12 SEP 2019 to 10 OCT 2019

EC-1, 12 SEP 2019 to 10 OCT 2019