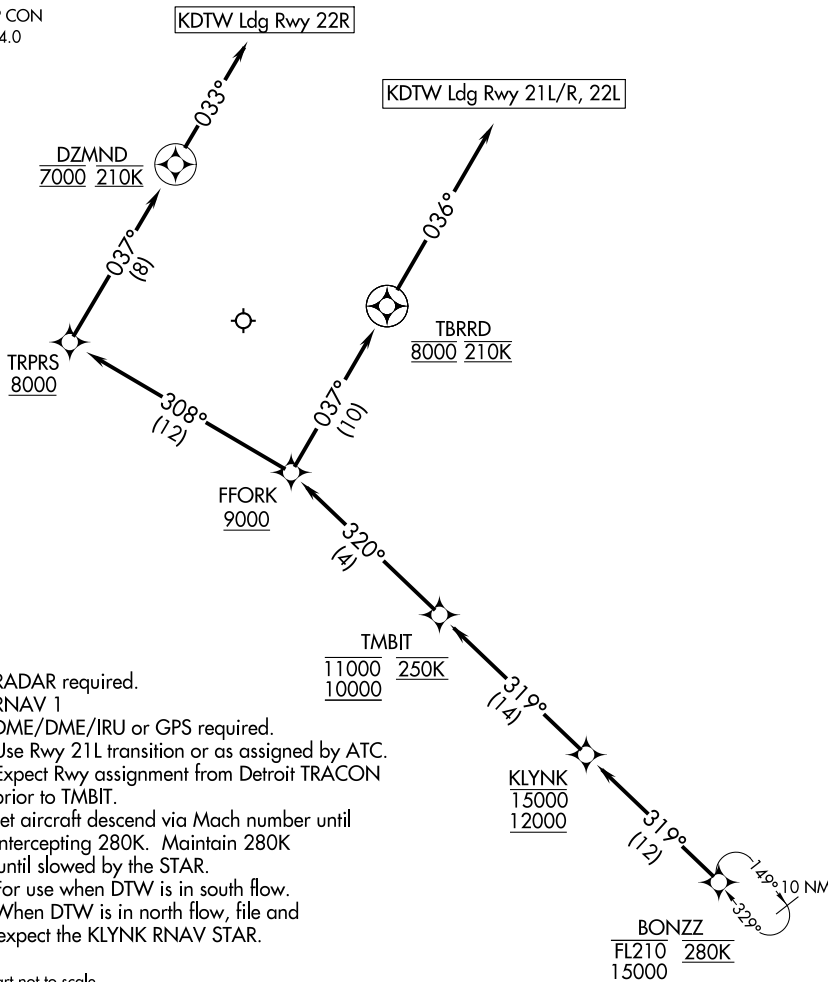


BONZZ ONE ARRIVAL (RNAV) Arrival Routes

DETROIT APP CON
126.225 284.0
D-ATIS
133.675



- NOTE: RADAR required.
- NOTE: RNAV 1
- NOTE: DME/DME/IRU or GPS required.
- NOTE: Use Rwy 21L transition or as assigned by ATC. Expect Rwy assignment from Detroit TRACON prior to TMBIT.
- NOTE: Jet aircraft descend via Mach number until intercepting 280K. Maintain 280K until slowed by the STAR.
- NOTE: For use when DTW is in south flow. When DTW is in north flow, file and expect the KLYNK RNAV STAR.

NOTE: Chart not to scale.

ARRIVAL ROUTE DESCRIPTION

From BONZZ on track 319° to cross KLYNK between 12000 and 15000, then on track 319° to cross TMBIT between 10000 and 11000 and at 250K, then on track 320° to cross FFORK at or above 9000.

LANDING RWYS 22L, 21L/R: From FFORK on track 037° to cross TBRRD at 8000 and at 210K, then on track 036°. Expect RADAR vectors to final approach course.

LANDING RWY 22R: From FFORK on track 308° to cross TRPRS at or above 8000, then on track 037° to cross DZMND at 7000 and at 210K, then on track 033°. Expect RADAR vectors to final approach course