

(CRAKN.CRAKN1) 18256

CRAKN ONE ARRIVAL (RNAV)

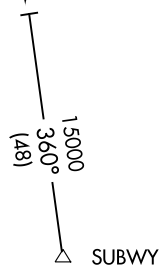
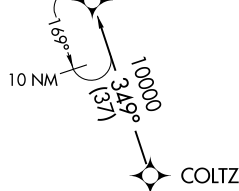
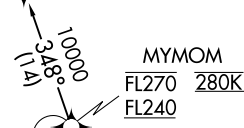
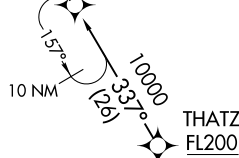
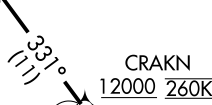
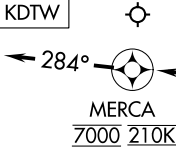
AL-119 (FAA)

DETROIT METROPOLITAN WAYNE COUNTY (DTW)

DETROIT, MICHIGAN

DETROIT APP CON
126.225 284.0
D-ATIS
133.675

Ldg KDTW



- NOTE: RADAR required.
- NOTE: RNAV 1.
- NOTE: DME/DME/IRU or GPS required.
- NOTE: Expect Rwy 3R.
- NOTE: Jet aircraft descend via Mach number until intercepting 280K. Maintain 280K until slowed by the STAR.
- NOTE: For use when DTW is in north flow. When DTW is in south flow, file and expect the HTROD RNAV STAR.

NOTE: Chart not to scale.

ARRIVAL ROUTE DESCRIPTION

SUBWY TRANSITION (SUBWY.CRAKN1)

From CRAKN on track 331° to cross CLDON between 9000 and 10000, then on track 284° to cross MERCA at 7000 and 210K, then on track 284°. Expect RADAR vectors to final approach course.

LOST COMMUNICATIONS:

From MERCA, execute ILS Rwy 3R approach.

CRAKN ONE ARRIVAL (RNAV)

(CRAKN.CRAKN1) 24MAY18

DETROIT, MICHIGAN

DETROIT METROPOLITAN WAYNE COUNTY (DTW)

EC-1, 12 SEP 2019 to 10 OCT 2019

EC-1, 12 SEP 2019 to 10 OCT 2019