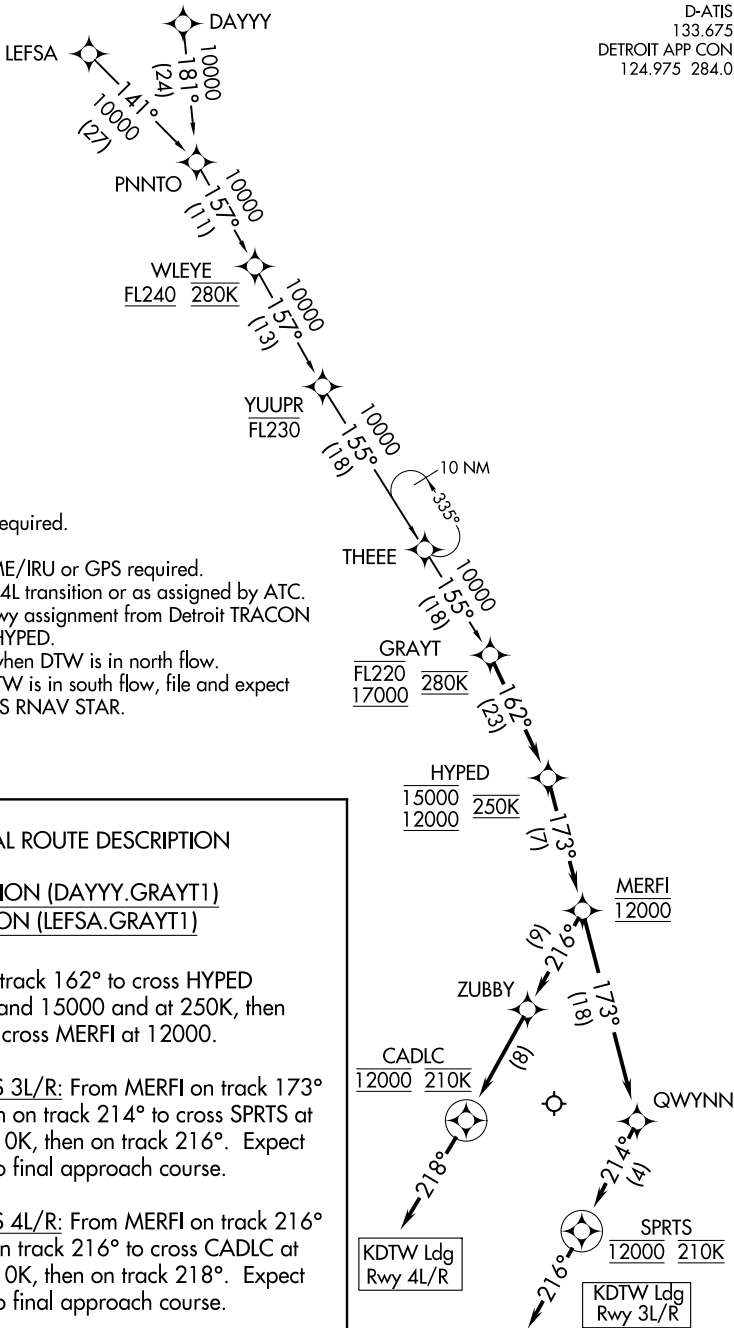


GRAY ONE ARRIVAL (RNAV)

DETROIT METROPOLITAN WAYNE COUNTY (DTW)

DETROIT, MICHIGAN

D-ATIS
133.675
DETROIT APP CON
124.975 284.0



- NOTE: RADAR required.
- NOTE: RNAV 1.
- NOTE: DME/DME/IRU or GPS required.
- NOTE: Use Rwy 4L transition or as assigned by ATC. Expect Rwy assignment from Detroit TRACON prior to HYPED.
- NOTE: For use when DTW is in north flow. When DTW is in south flow, file and expect the LAYKS RNAV STAR.

NOTE: Chart not to scale.

ARRIVAL ROUTE DESCRIPTION

DAYYY TRANSITION (DAYYY.GRAYT1)
LEFSA TRANSITION (LEFSA.GRAYT1)

From GRAYT on track 162° to cross HYPED between 12000 and 15000 and at 250K, then on track 173° to cross MERFI at 12000.

LANDING RWYS 3L/R: From MERFI on track 173° to QWYNN, then on track 214° to cross SPRTS at 12000 and at 210K, then on track 216°. Expect RADAR vectors to final approach course.

LANDING RWYS 4L/R: From MERFI on track 216° to ZUBBY, then on track 216° to cross CADLC at 12000 and at 210K, then on track 218°. Expect RADAR vectors to final approach course.

KDTW Ldg
Rwy 4L/R

KDTW Ldg
Rwy 3L/R

GRAY ONE ARRIVAL (RNAV)

(GRAYT.GRAYT1) 24MAY18

DETROIT, MICHIGAN
DETROIT METROPOLITAN WAYNE COUNTY (DTW)