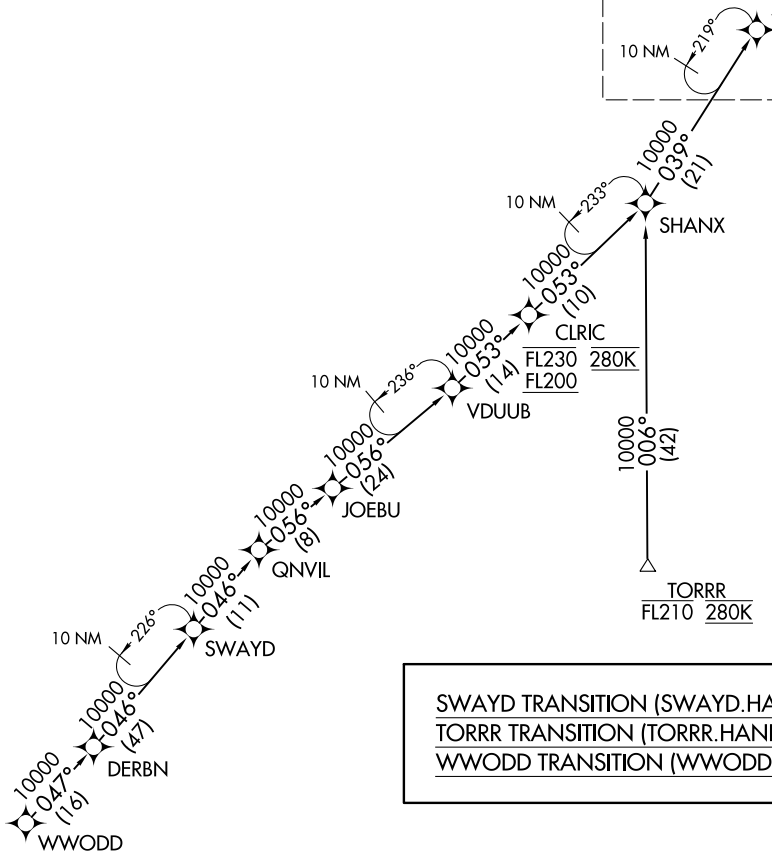


HANBL ONE ARRIVAL (RNAV) Transition Routes

D-ATIS
133.675
DETROIT APP CON
124.975 284.0

See following page
for arrival routes

HANBL
FL210 280K
17000



SWAYD TRANSITION (SWAYD.HANBL1)
 TORRR TRANSITION (TORRR.HANBL1)
 WWODD TRANSITION (WWODD.HANBL1)

- NOTE: RADAR required.
- NOTE: RNAV 1.
- NOTE: DME/DME/IRU or GPS required.
- NOTE: Use Runway 22R transition or as assigned by ATC. Expect runway assignment from Detroit TRACON prior to PRWLR.
- NOTE: For use when DTW is in south flow. When DTW is in north flow, file and expect the LECTR RNAV STAR.
- NOTE: TORRR Transition for use by CVG/DAY/SDF/LEX terminal area departures at or below FL210 only and ATC use as assigned.

(CONTINUED ON FOLLOWING PAGE)

NOTE: Chart not to scale.

HANBL ONE ARRIVAL (RNAV) Transition Routes