

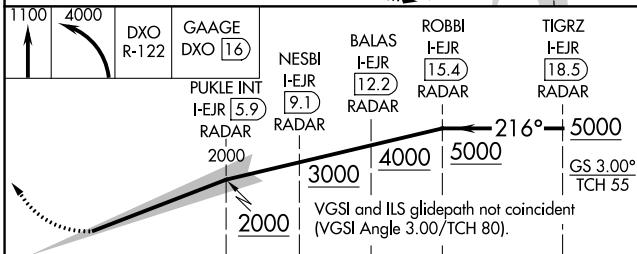
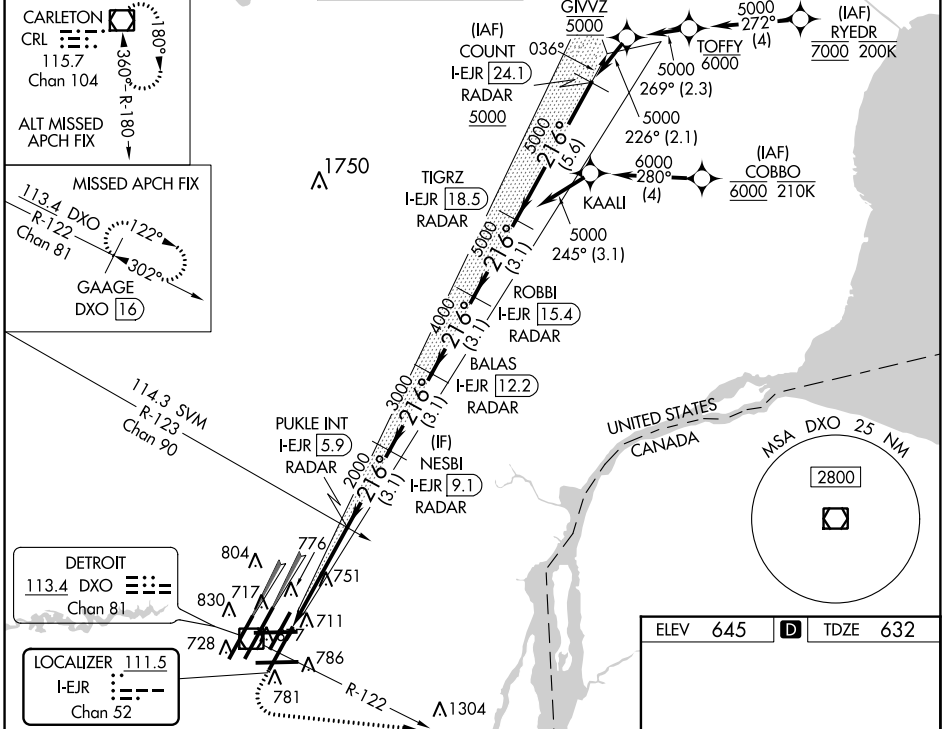
LOC/DME I-EJR <b>111.5</b> Chan <b>52</b>	APP CRS <b>216°</b>	Rwy Idg TDZE Apt Elev	<b>10001</b> <b>632</b> <b>645</b>
-------------------------------------------------	------------------------	-----------------------------	------------------------------------------

# ILS RWY 21L (SA CAT I & II)

DETROIT METROPOLITAN WAYNE COUNTY (DTW)

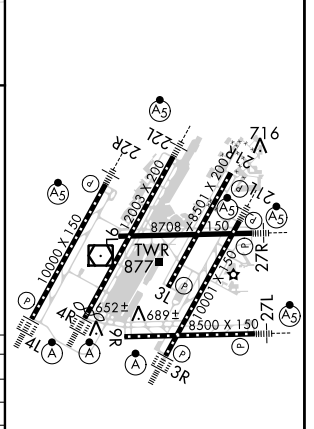
RNAV 1-GPS. From RYEDR and COBBO: RNAV 1-DME/DME/IRU or GPS required. Aircraft not DME/DME/IRU or GPS equipped - RADAR required for procedure entry.	MALSR 	MISSED APPROACH: Climb to 1100 then climbing left turn to 4000 on DXO R-122 to GAAGE/DXO 16 DME and hold.
Simultaneous approach authorized. DME or RADAR required. SA CAT I: Requires specific OPSPEC, MSPEC, or LOA approval and use of HUD to DH. SA CAT II: Reduced lighting; requires specific OPSPEC, MSPEC, or LOA approval and use of Autoland or HUD to touchdown.		

D-ATIS <b>133.675</b>	DETROIT APP CON <b>125.15 284.0</b>	METRO TOWER <b>118.4 317.725</b>	GND CON <b>121.8</b> (NW) <b>119.45</b> (NE) <b>132.725</b> (SW) <b>119.25</b> (SE)	CINC DEL <b>120.65</b>	CPDLC
--------------------------	----------------------------------------	-------------------------------------	-------------------------------------------------------------------------------------------	---------------------------	-------



CATEGORY	A	B	C	D
S-ILS 21L	SA CAT I	RA 148/14	150 DA 782	
S-ILS 21L	SA CAT II	RA 98/12	100 DA 732	

ELEV 645	<b>D</b>	TDZE 632
----------	----------	----------



HIRL all runways  
 REL Rwy 3L, 9L, 9R and 21R  
 TDZ/CL Rwy 3R, 4L, 4R and 22R

## SA CATEGORY I & II ILS - SPECIAL AIRCREW & AIRCRAFT CERTIFICATION REQUIRED

EC-1, 12 SEP 2019 to 10 OCT 2019

EC-1, 12 SEP 2019 to 10 OCT 2019