


LOC/DME I-DWC 110.7 Chan 44	APP CRS 216°	Rwy Idg TDZE Apt Elev	12003 637 645
---	------------------------	-----------------------------	--

ILS RWY 22L (SA CAT I)

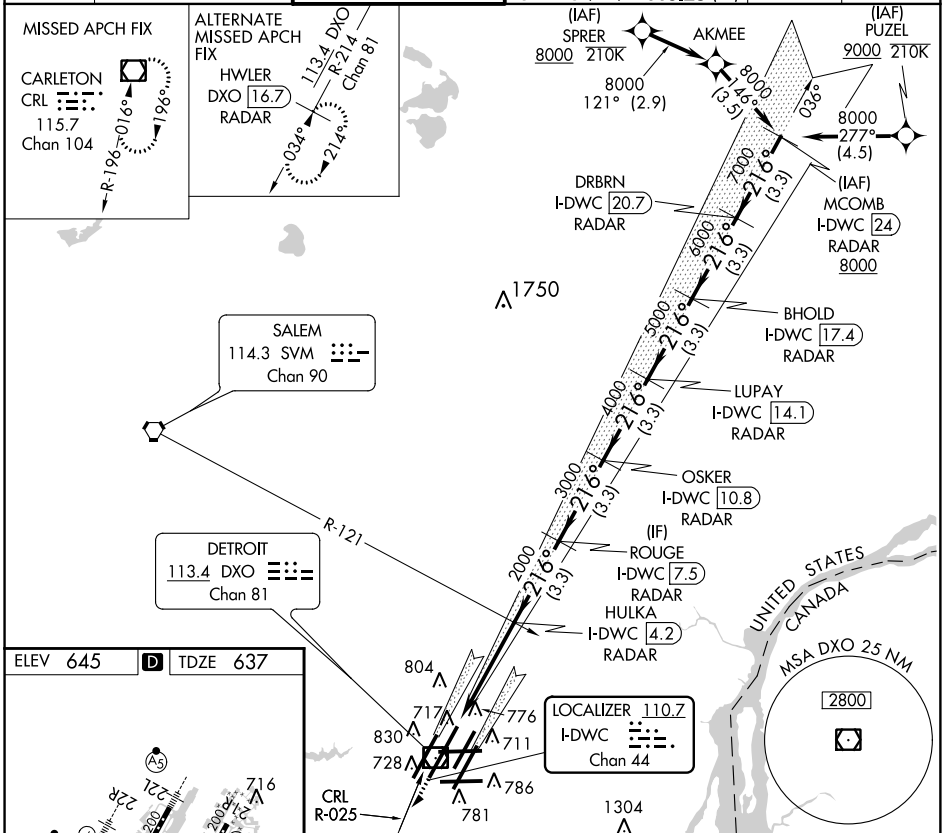
DETROIT METROPOLITAN WAYNE COUNTY (DTW)

DME or RADAR required. RNAV 1-DME/DME/IRU or RADAR required for procedure entry.

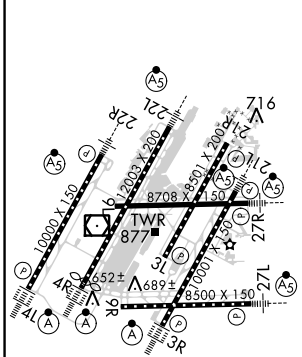
MALSRR  MISSED APPROACH: Climb to 4000 on heading 216° and CRL VOR/DME R-025 to CRL VOR/DME and hold, continue climb-in-hold to 4000.

Simultaneous approach authorized. Requires specific OPSPEC, MSPEC, or LOA approval and use of HUD to DH.

D-ATIS 133.675	DETROIT APP CON 124.05 284.0	METRO TOWER 128.125 317.725	GND CON 121.8 (NW) 132.725 (SW)	119.45 (NE) 119.25 (SE)	CLNC DEL 120.65	CPDLC
--------------------------	--	---------------------------------------	---	--	---------------------------	-------



ELEV 645	D	TDZE 637
----------	----------	----------



TDZ/CL Rwy 3R, 4L, 4R and 22R
REIL Rwy 3L, 9L, 9R and 21R
HIRL all runways

4000	CRL R-025	CRL	OSKER I-DWC 10.8	LUPAY I-DWC 14.1	BOLD I-DWC 17.4	DRBRN I-DWC 20.7	MCOMB I-DWC 24
3000	HULKA I-DWC 4.2	ROUGE I-DWC 7.5	OSKER I-DWC 10.8	LUPAY I-DWC 14.1	BOLD I-DWC 17.4	DRBRN I-DWC 20.7	MCOMB I-DWC 24
2000	HULKA I-DWC 4.2	ROUGE I-DWC 7.5	OSKER I-DWC 10.8	LUPAY I-DWC 14.1	BOLD I-DWC 17.4	DRBRN I-DWC 20.7	MCOMB I-DWC 24
1000	HULKA I-DWC 4.2	ROUGE I-DWC 7.5	OSKER I-DWC 10.8	LUPAY I-DWC 14.1	BOLD I-DWC 17.4	DRBRN I-DWC 20.7	MCOMB I-DWC 24
0	HULKA I-DWC 4.2	ROUGE I-DWC 7.5	OSKER I-DWC 10.8	LUPAY I-DWC 14.1	BOLD I-DWC 17.4	DRBRN I-DWC 20.7	MCOMB I-DWC 24

112011	4.3 NM	3.3 NM	3.3 NM	3.3 NM	3.3 NM	3.3 NM
CATEGORY	A	B	C	D		
S-ILS 22L	SA CAT I		RA 148/14	150 DA 787		

SA CATEGORY I ILS- SPECIAL AIRCREW & AIRCRAFT CERTIFICATION REQUIRED

EC-1, 12 SEP 2019 to 10 OCT 2019

EC-1, 12 SEP 2019 to 10 OCT 2019