

LOC/DME I-EJR <b>111.5</b> Chan <b>52</b>	APP CRS <b>216°</b>	Rwy Idg TDZE <b>632</b> Apt Elev <b>645</b>
---	------------------------	---

# ILS or LOC RWY 21L

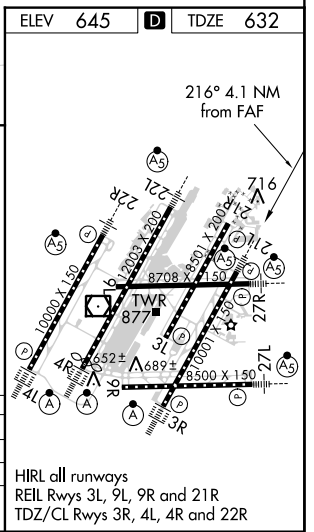
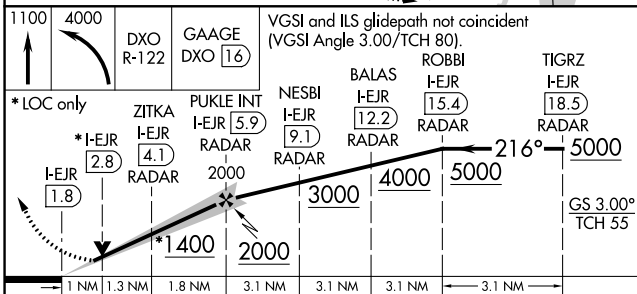
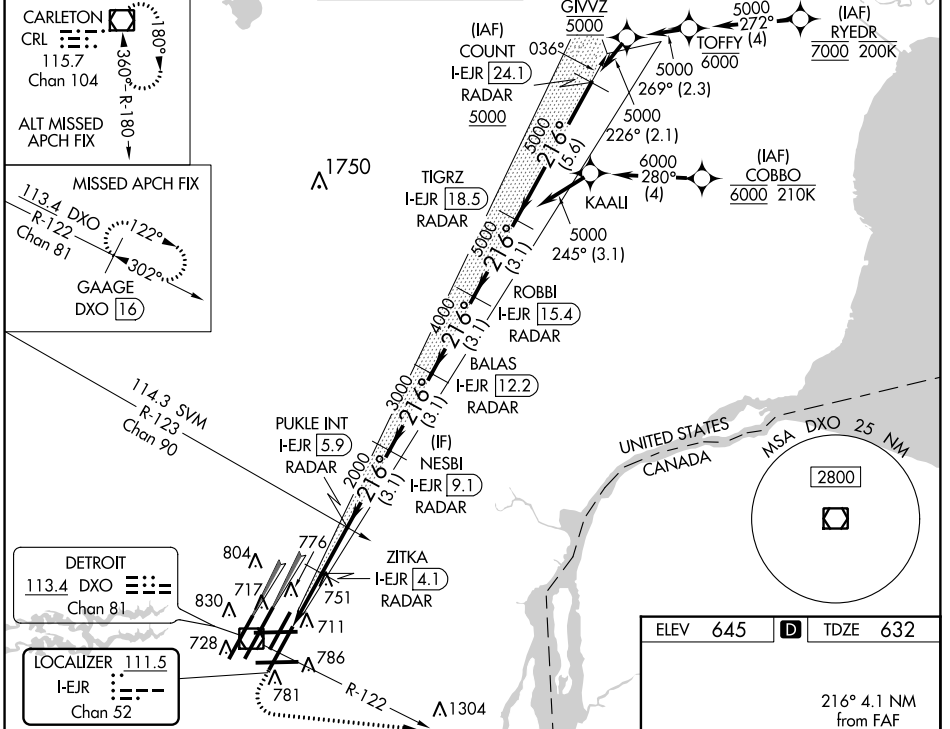
DETROIT METROPOLITAN WAYNE COUNTY (DTW)

RNAV 1-GPS  
From RYEDR and COBBO: RNAV 1-DME/DME/IRU or GPS required. Aircraft not DME/DME/IRU or GPS equipped - RADAR required for procedure entry.

MALSRS  
MISSED APPROACH: Climb to 1100 then climbing left turn to 4000 on DXO R-122 to GAAGE/DXO 16 DME and hold.

Simultaneous approach authorized. DME or RADAR required.  
\*\*RVR 1800 authorized with use of FD or AP or HUD to DA.

D-ATIS <b>133.675</b>	DETROIT APP CON <b>125.15 284.0</b>	METRO TOWER <b>118.4 317.725</b>	GND CON <b>121.8 (NW) 119.45 (NE)</b> <b>132.725 (SW) 119.25 (SE)</b>	CLNC DEL <b>120.65</b>	CPDLC
--------------------------	--	-------------------------------------	---	---------------------------	-------



CATEGORY	A	B	C	D
S-ILS 21L **	832/24			
S-LOC 21L	1020/24	388 (400-½)	1020/35	388 (400-¾)
CIRCLING	1180-1	535 (600-1)	1180-1½ 535 (600-1½)	1240-2 595 (600-2)

EC-1, 12 SEP 2019 to 10 OCT 2019

EC-1, 12 SEP 2019 to 10 OCT 2019