

LOC I-DMI 108.5	APP CRS 276°	Rwy ldg TDZE 8708 635	Apt Elev 645
---------------------------	------------------------	-------------------------------------	------------------------

ILS or LOC RWY 27R

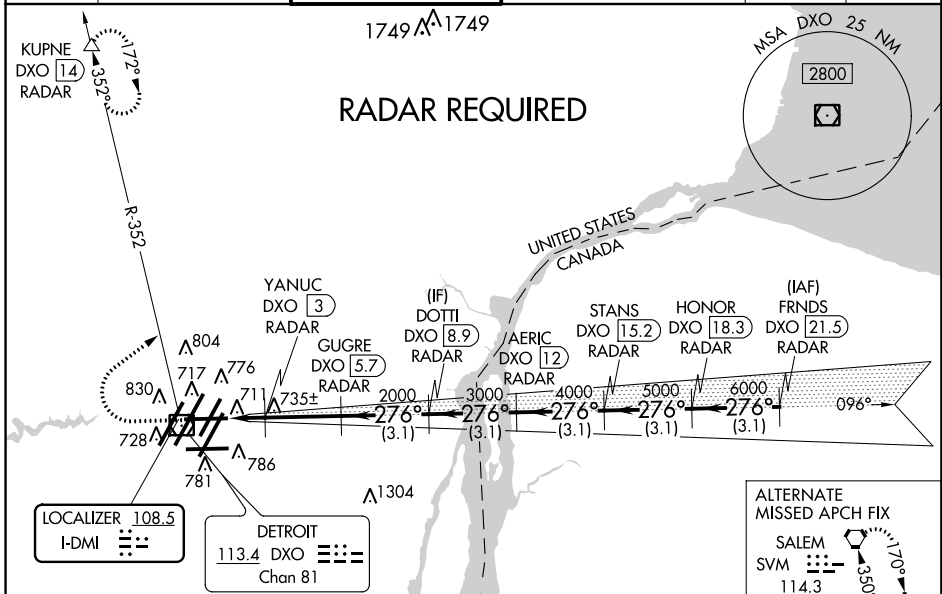
DETROIT METROPOLITAN WAYNE COUNTY (DTW)

▼ DME or RADAR required. Simultaneous approach authorized.
 DME from DXO VOR/DME. Simultaneous reception of I-DMI and DXO DME required. For inop ALS, increase S-LOC 27R Cats C and D visibility to RVR 5500.
 ** RVR 1800 authorized with use of FD or AP or HUD to DA.

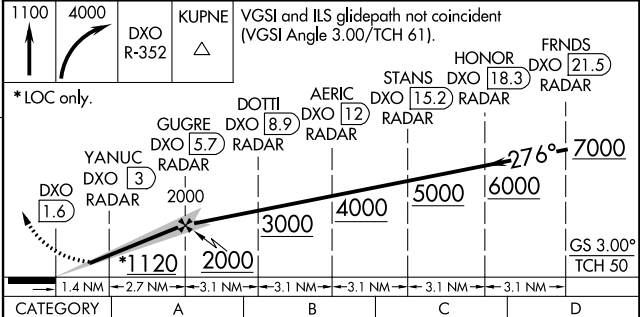
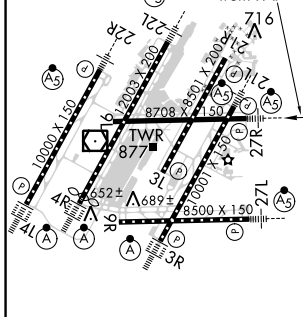
MALSR

MISSED APPROACH: Climb to 1100 then climbing right turn to 4000 on DXO VOR/DME R-352 to KUPNE/DXO 14 DME/RADAR and hold, continue climb-in-hold to 4000.

D-ATIS 133.675	DETROIT APP CON 125.15 284.0	METRO TOWER 118.4 317.725	GND CON 121.8 (NW) 119.45 (NE) 132.725 (SW) 119.25 (SE)	CLNC DEL 120.65	CPDLC
--------------------------	--	-------------------------------------	---	---------------------------	-------



ELEV 645	D	TDZE 635
----------	----------	----------



TDZ/CL Rwy 3Rs 3R, 4L, 4R and 22R
 REIL Rwy 3L, 9L, 9R and 21R
 HIRL all runways

FAF to MAP 4.1 NM

Knots	60	90	120	150	180
Min:Sec	4:06	2:44	2:03	1:38	1:22

CATEGORY	A	B	C	D
S-ILS 27R	** 835/24 200 (200-½)			
S-LOC 27R	1000/24	365 (400-½)	1000/35	365 (400-¾)
C CIRCLING	1180-1	535 (600-1)	1180-1½ 535 (600-½)	1240-2 595 (600-2)

EC-1, 12 SEP 2019 to 10 OCT 2019

EC-1, 12 SEP 2019 to 10 OCT 2019