

DETROIT, MICHIGAN

AL-119 (FAA)

19115

LOC/DME I-JKI 111.95	APP CRS 216°	Rwy Idg TDZE Apt Elev	10000 642 645
Chan 56 (Y)			

ILS PRM Z RWY 22R (SA CAT I & II) (CLOSE PARALLEL)

DETROIT METROPOLITAN WAYNE COUNTY (DTW)

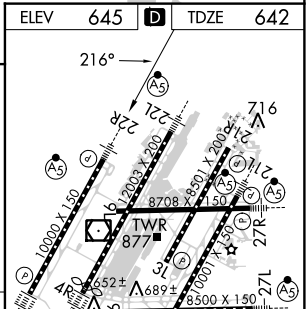
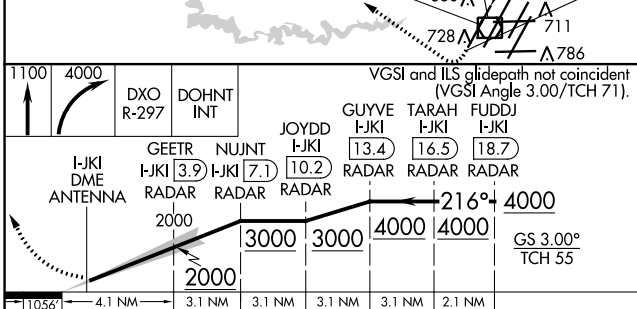
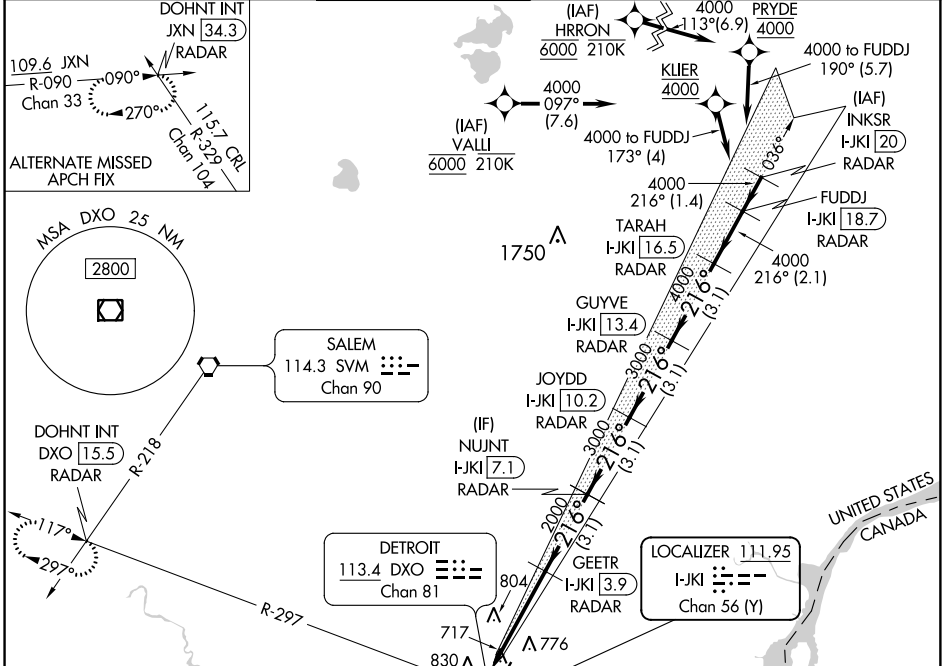
RNAV 1-GPS, HRRON and VALLI: RNAV 1-DME/DME/IRU or GPS required.
 Aircraft not DME/DME/IRU or GPS equipped - RADAR required for procedure entry.

Simultaneous approach authorized. Use of FD or AP required during simultaneous operations. Dual VHF Comm required. See additional requirements on AAUP.
 SA CAT I: Requires specific OPSPEC, MSPEC, or LOA approval and use of HUD to DH.
 SA CAT II: Reduced lighting: Requires specific OPSPEC, MSPEC, or LOA approval and use of autoland or HUD to touchdown.

MALS R

MISSED APPROACH: Climb to 1100 then climbing right turn to 4000 on DXO YOR/DME R-297 to DOHNT INT/DXO 15.5 DME/RADAR and hold.

D-ATIS 133.675	DETROIT APP CON 124.05 284.0	METRO TOWER 135.0 317.725 PRM 127.05	GND CON 121.8 (NW) 119.45 (NE) 132.725 (SW) 119.25 (SE)	CLNC DEL 120.65	CPDLC
--------------------------	--	--	---	---------------------------	-------



1100	4000	DXO R-297	DOHNT INT	VGS1 and ILS glidepath not coincident (VGS1 Angle 3.00/TCH 71).			
I-JKI DME ANTENNA	GEETR I-JKI [3.9] RADAR	NUJNT I-JKI [7.1] RADAR	JOYDD I-JKI [10.2] RADAR	GUYVE I-JKI [13.4] RADAR	TARAH I-JKI [16.5] RADAR	FUDDJ I-JKI [18.7] RADAR	216° 4000
	2000	3000	3000	4000	4000		GS 3.00° TCH 55
	4.1 NM	3.1 NM	3.1 NM	3.1 NM	3.1 NM	2.1 NM	
CATEGORY	A	B	C	D			
S-ILS 22R	SA CAT I		RA 148/14		150 DA 792		
S-ILS 22R	SA CAT II		RA 98/12		100 DA 742		

SA CATEGORY I & II ILS - SPECIAL AIRCREW & AIRCRAFT CERTIFICATION REQUIRED

DETROIT, MICHIGAN 42°13'N-83°21'W DETROIT METROPOLITAN WAYNE COUNTY (DTW)
 Orig-A 25APR19 **ILS PRM Z RWY 22R (SA CAT I & II) (CLOSE PARALLEL)**

TDZ/CL Rwy 3R, 4L, 4R and 22R
 REIL Rwy 3L, 9L, 9R and 21R
 HIRL all Rwy

EC-1, 12 SEP 2019 to 10 OCT 2019

EC-1, 12 SEP 2019 to 10 OCT 2019