

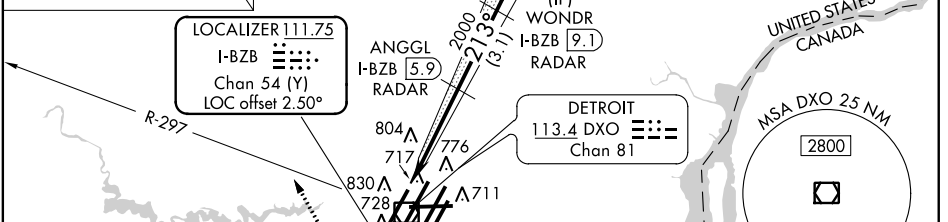
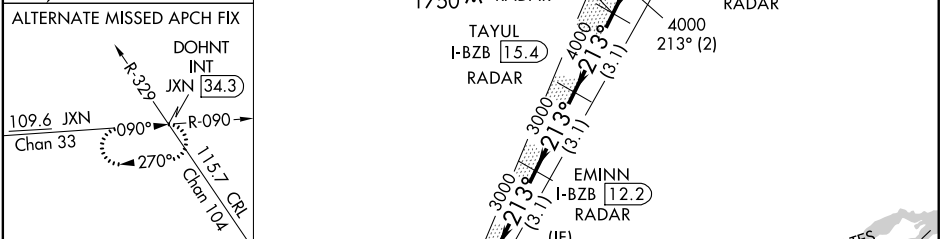
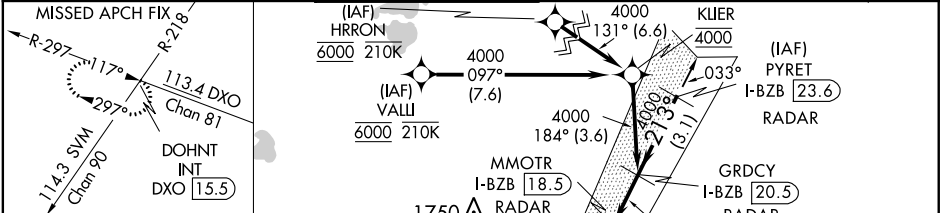
LOC/DME I-BZB <b>111.75</b> Chan <b>54 (Y)</b>	APP CRS <b>213°</b>	Rwy Idg TDZE <b>642</b> Apt Elev <b>645</b>	<b>10000</b>
--	------------------------	---	--------------

# ILS Y RWY 22R

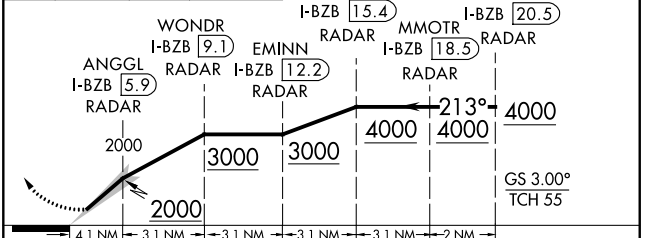
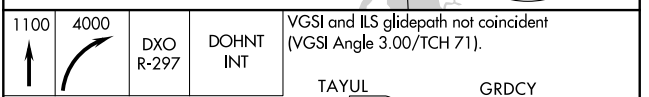
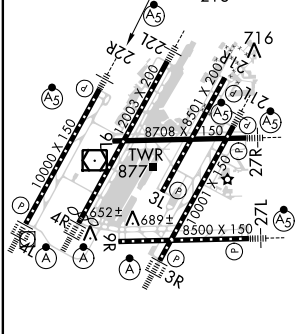
DETROIT METROPOLITAN WAYNE COUNTY (DTW)

RNAV 1-GPS. HRRON and VALLI: RNAV 1-DME/DME/IRU or GPS required. Aircraft not DME/DME/IRU or GPS equipped - RADAR required for procedure entry.	MALSRS 	MISSED APPROACH: Climb to 1100 then climbing right turn to 4000 on DXO VOR/DME R-297 to DOHNT INT/DXO 1.5 DME and hold.
<p>Simultaneous approach authorized. **RVR 1800 authorized with use of FD or AP or HUD to DA.</p>		

D-ATIS <b>133.675</b>	DETROIT APP CON <b>124.05 284.0</b>	METRO TOWER <b>135.0 317.725</b>	GND CON <b>121.8 (NW) 119.45 (NE)</b> <b>132.725 (SW) 119.25 (SE)</b>	CLNC DEL <b>120.65</b>	CPDLC
--------------------------	--	-------------------------------------	---	---------------------------	-------



ELEV 645	TDZE 642
----------	----------



TDZ/CL Rws 3R, 4L, 4R and 22R REIL Rws 3L, 9L, 9R and 21R HIRL all runways	CATEGORY	A	B	C	D
S-ILS 22R**	892/24 250 (300-1/2)				

EC-1, 12 SEP 2019 to 10 OCT 2019

EC-1, 12 SEP 2019 to 10 OCT 2019