

LOC/DME I-JKI <b>111.95</b> Chan <b>56 (Y)</b>	APP CRS <b>216°</b>	Rwy Idg TDZE <b>642</b> Apt Elev <b>645</b>	<b>10000</b>
--	------------------------	---	--------------

# ILS Z or LOC RWY 22R

DETROIT METROPOLITAN WAYNE COUNTY (DTW)

RNAV 1-GPS, HRRON and VALLI: RNAV 1-DME/DME/IRU or GPS required.

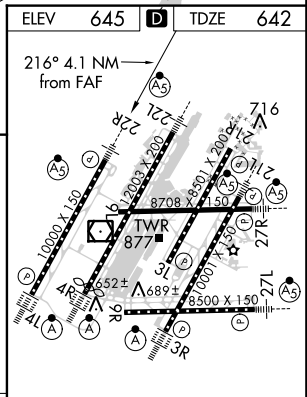
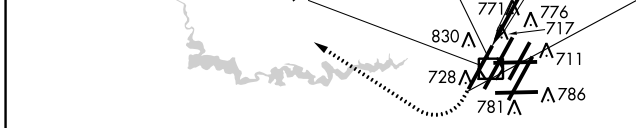
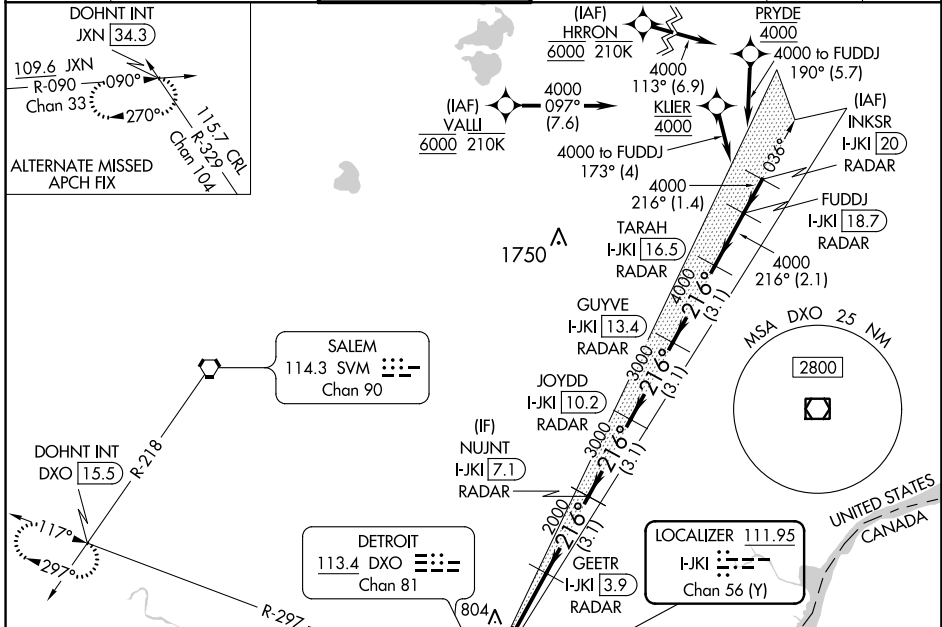
Aircraft not DME/DME/IRU or GPS equipped - RADAR required for procedure entry.



MISSED APPROACH: Climb to 1100 then climbing right turn to 4000 on DXO VOR/DME R-297 to DOHNT INT/DXO 15.5 DME and hold.

Simultaneous approach authorized.  
\*\*RVR 1800 authorized with use of FD or AP or HUD to DA.

D-ATIS <b>133.675</b>	DETROIT APP CON <b>124.05 284.0</b>	METRO TOWER <b>135.0 317.725</b>	GND CON <b>121.8 (NW) 119.45 (NE)</b> <b>132.725 (SW) 119.25 (SE)</b>	CLNC DEL <b>120.65</b>	CPDLC
--------------------------	--	-------------------------------------	---	---------------------------	-------



1100	4000	DXO R-297	DOHNT INT	VGSi and ILS glidepath not coincident (VGSi Angle 3.00/TCH 71).			
*LOC only.		GEETR I-JKI 3.9 RADAR	NUJNT I-JKI 7.1 RADAR	JOYDD I-JKI 10.2 RADAR	GUYVE I-JKI 13.4 RADAR	TARAH I-JKI 16.5 RADAR	FUDDJ I-JKI 18.7 RADAR
I-JKI DME ANTENNA I-JKI 0.2	I-JKI 0.9	2000	3000	3000	4000	4000	216° 4000
1056	1.1 NM	3 NM	3.1 NM	3.1 NM	3.1 NM	3.1 NM	2.1 NM
CATEGORY	A		B		C		D
S-ILS 22R**	842/24						
S-LOC 22R	1060/24		418 (500-½)		1060/40		418 (500-¾)
CIRCLING	1180-1		535 (600-1)		1180-1½		1240-2
					535 (600-1½)		595 (600-2)

TDX/CL Rws 3R, 4L, 4R and 22R					
REIL Rws 3L, 9L, 9R and 21R					
HIRL all Rws					
FAF to MAP 4.1 NM					
Knots	60	90	120	150	180
Min:Sec	4:06	2:44	2:03	1:38	1:22

# ILS Z or LOC RWY 22R

EC-1, 12 SEP 2019 to 10 OCT 2019

EC-1, 12 SEP 2019 to 10 OCT 2019