

LOC/DME I-HJT	APP CRS	Rwy Idg	<b>10000</b>
<b>111.95</b>	<b>036°</b>	TDZE	<b>645</b>
Chan <b>56(Y)</b>		Apt Elev	<b>645</b>

## ILS Z or LOC RWY 4L

DETROIT METROPOLITAN WAYNE COUNTY (DTW)

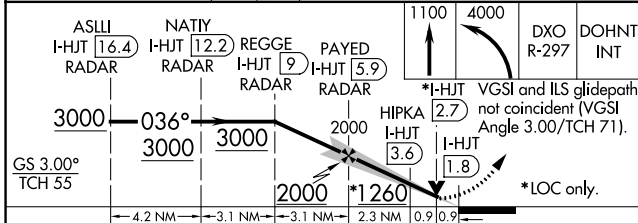
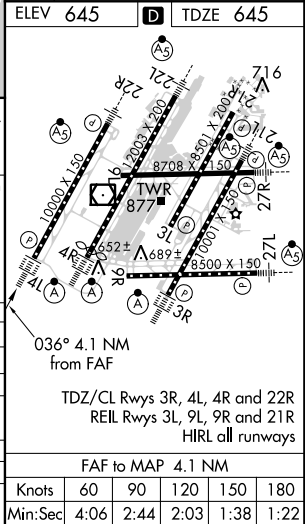
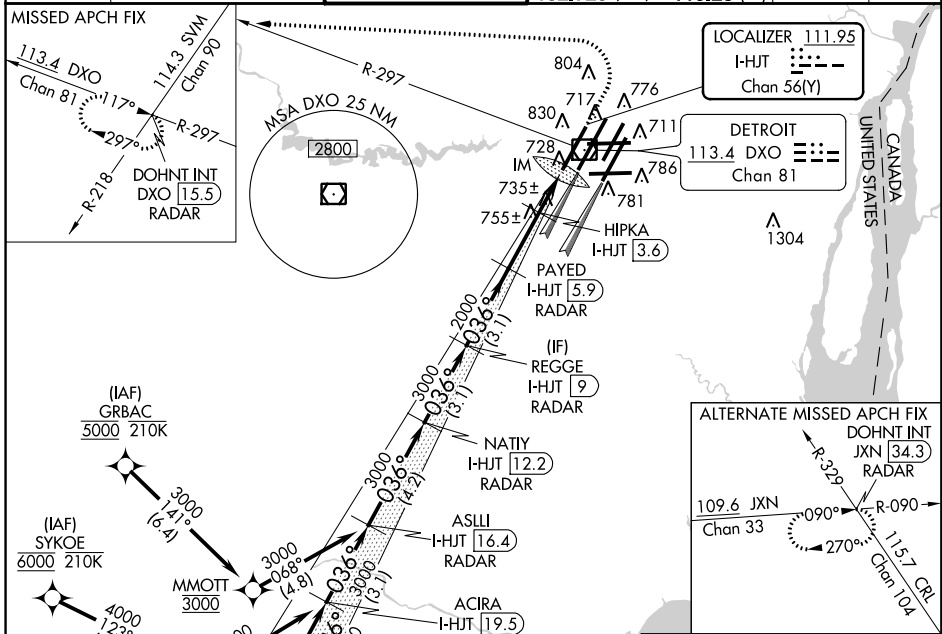
RADAR required for procedure entry. DME or RADAR required. RNAV 1-DME/DME/IRU or GPS required for procedure entry at SYKOE and GRBAC.

ALSF-2

MISSED APPROACH: Climb to 1100 then climbing left turn to 4000 on DXO VOR/DME R-297 to DOHNT INT/DXO 15.5 DME/RADAR and hold.

Simultaneous approach authorized.

D-ATIS	DETROIT APP CON	METRO TOWER	GND CON	CLNC DEL	CPDLC
<b>133.675</b>	<b>124.05 284.0</b>	<b>135.0 317.725</b>	<b>121.8 (NW) 119.45 (NE)</b> <b>132.725 (SW) 119.25 (SE)</b>	<b>120.65</b>	



CATEGORY	A	B	C	D
S-ILS 4L	845/18 200 (200-1/2)			
S-LOC 4L	1260/24	615 (700-1/2)	1260-1 3/4	615 (700-1 3/4)
<b>C</b> CIRCLING	1260-1	615 (700-1)	1260-1 3/4	615 (700-2)
HIPKA FIX MINIMUMS (DME REQUIRED)				
S-LOC 4L	1000/24	355 (400-1/2)	1000/30	355 (400-3/4)
<b>C</b> CIRCLING	1180-1	535 (600-1)	1180-1 1/2	595 (600-2)

FAF to MAP 4.1 NM					
Knots	60	90	120	150	180
Min:Sec	4:06	2:44	2:03	1:38	1:22

EC-1, 12 SEP 2019 to 10 OCT 2019

EC-1, 12 SEP 2019 to 10 OCT 2019