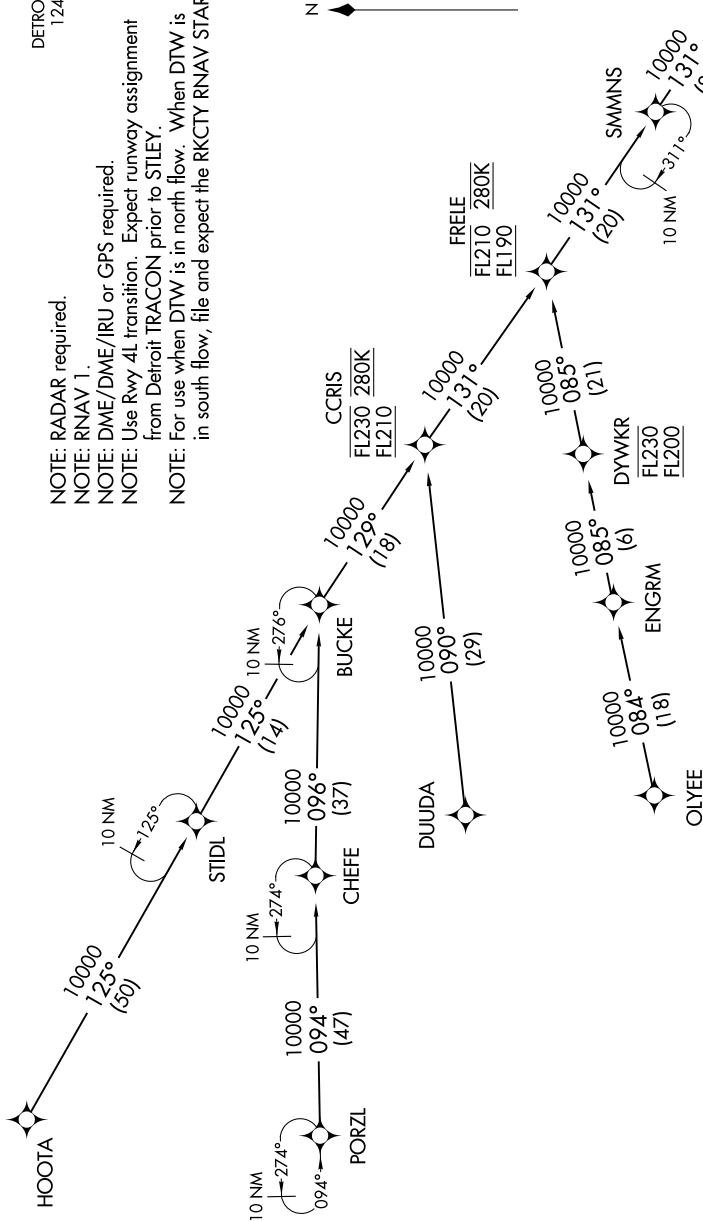


KKISS ONE ARRIVAL (RNAV) Transition Routes AL-119 (FAA)

EC-1, 12 SEP 2019 to 10 OCT 2019

D-ATIS
133.675
DETROIT APP CON
124.975 284.0

NOTE: RADAR required.
NOTE: RNAV 1.
NOTE: DME/DME/IRU or GPS required.
NOTE: Use Rwy 4L transition. Expect runway assignment from Detroit TRACON prior to STLEY.
NOTE: For use when DTW is in north flow. When DTW is in south flow, file and expect the RKCTY RNAV STAR.



DUUDA TRANSITION (DUUDA.KKISS1)
 HOOTA TRANSITION (HOOTA.KKISS1)
 OLYEE TRANSITION (OLYEE.KKISS1)
 PORZL TRANSITION (PORZL.KKISS1)

See following page for arrival route

NOTE: Chart not to scale.

(CONTINUED ON FOLLOWING PAGE)

EC-1, 12 SEP 2019 to 10 OCT 2019