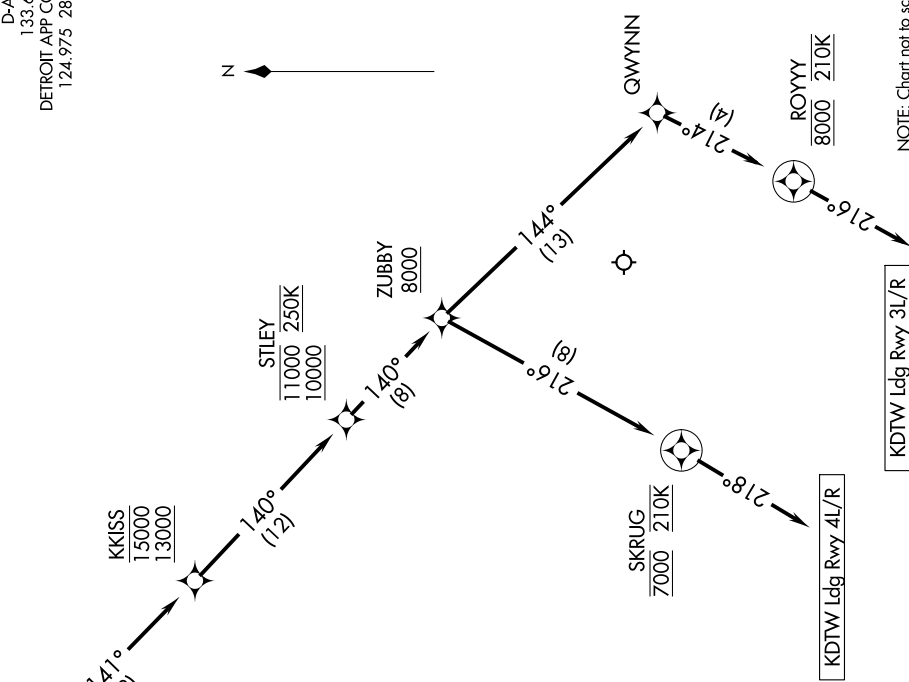
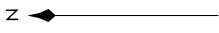


(RKCTY.KKISS1) 18200

DETROIT METROPOLITAN WAYNE COUNTY (DTW) **KKISS ONE ARRIVAL (RNAV) Arrival Route** AL-119 (FAA) DETROIT, MICHIGAN

D-AITIS
133.675
DETROIT APP CON
124.975 284.0



EC-1, 12 SEP 2019 to 10 OCT 2019

NOTE: RADAR required.
 NOTE: RNAV 1.
 NOTE: DME/DME/IRU or GPS required.
 NOTE: Use Rwy 4L transition. Expect runway assignment from Detroit TRACON prior to STILEY.
 NOTE: For use when DTW is in north flow. When DTW is in south flow, file and expect the RKCTY RNAV STAR.

ARRIVAL ROUTE DESCRIPTION

From RKCTY on track 141° to cross KKISS between 13000 and 15000, then on track 140° to cross STILEY between 10000 and 11000 and at 250K, then on track 140° to cross ZUBBY at or above 8000.

LANDING RWYS 3L/R: From ZUBBY on track 144° to QWYNN, then on track 214° to cross ROYYY at 8000 and at 210K, then on track 216°. Expect RADAR vectors to final approach course.

LANDING RWYS 4L/R: From ZUBBY on track 216° to cross SKRUG at 7000 and at 210K, then on track 218°. Expect RADAR vectors to final approach course.

EC-1, 12 SEP 2019 to 10 OCT 2019

(RKCTY.KKISS1) 19JUL18 **KKISS ONE ARRIVAL (RNAV) Arrival Route**

DETROIT, MICHIGAN **DETROIT METROPOLITAN WAYNE COUNTY (DTW)**