

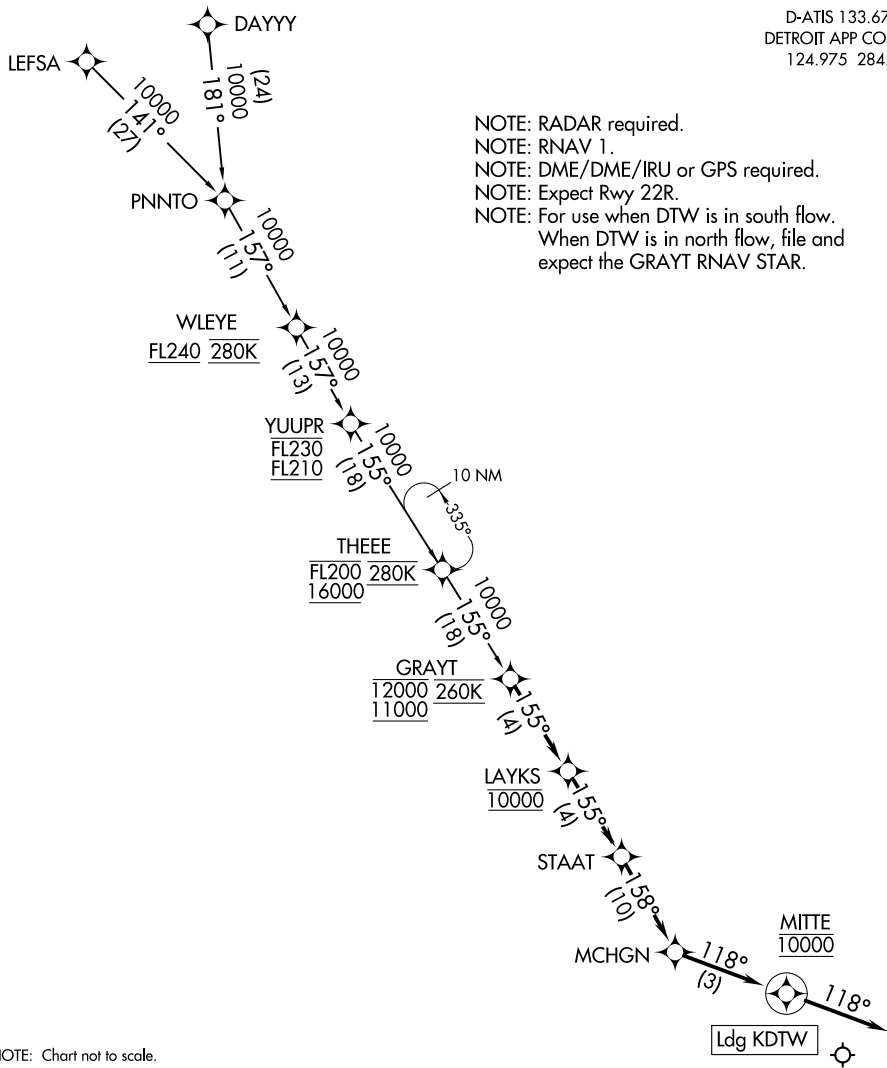
(GRAYT.LAYKS1) 18144

LAYKS ONE ARRIVAL (RNAV)

DETROIT METROPOLITAN WAYNE COUNTY (DTW)
AL-119 (FAA)
DETROIT, MICHIGAN

D-ATIS 133.675
DETROIT APP CON
124.975 284.0

- NOTE: RADAR required.
- NOTE: RNAV 1.
- NOTE: DME/DME/IRU or GPS required.
- NOTE: Expect Rwy 22R.
- NOTE: For use when DTW is in south flow.
When DTW is in north flow, file and expect the GRAYT RNAV STAR.



NOTE: Chart not to scale.

ARRIVAL ROUTE DESCRIPTION

DAYYY TRANSITION (DAYYY.LAYKS1)

LEFSA TRANSITION (LEFSA.LAYKS1)

From GRAYT on track 155° to cross LAYKS at 10000, then on track 155° to STAAT, then on track 158° to MCHGN, then on track 118° to cross MITTE at 10000, then on track 118°. Expect RADAR vectors to final approach course.

LOST COMMUNICATIONS: From MITTE, execute ILS Z 22R approach.

LAYKS ONE ARRIVAL (RNAV)

(GRAYT.LAYKS1) 24MAY18

DETROIT, MICHIGAN
DETROIT METROPOLITAN WAYNE COUNTY (DTW)

EC-1, 12 SEP 2019 to 10 OCT 2019

EC-1, 12 SEP 2019 to 10 OCT 2019