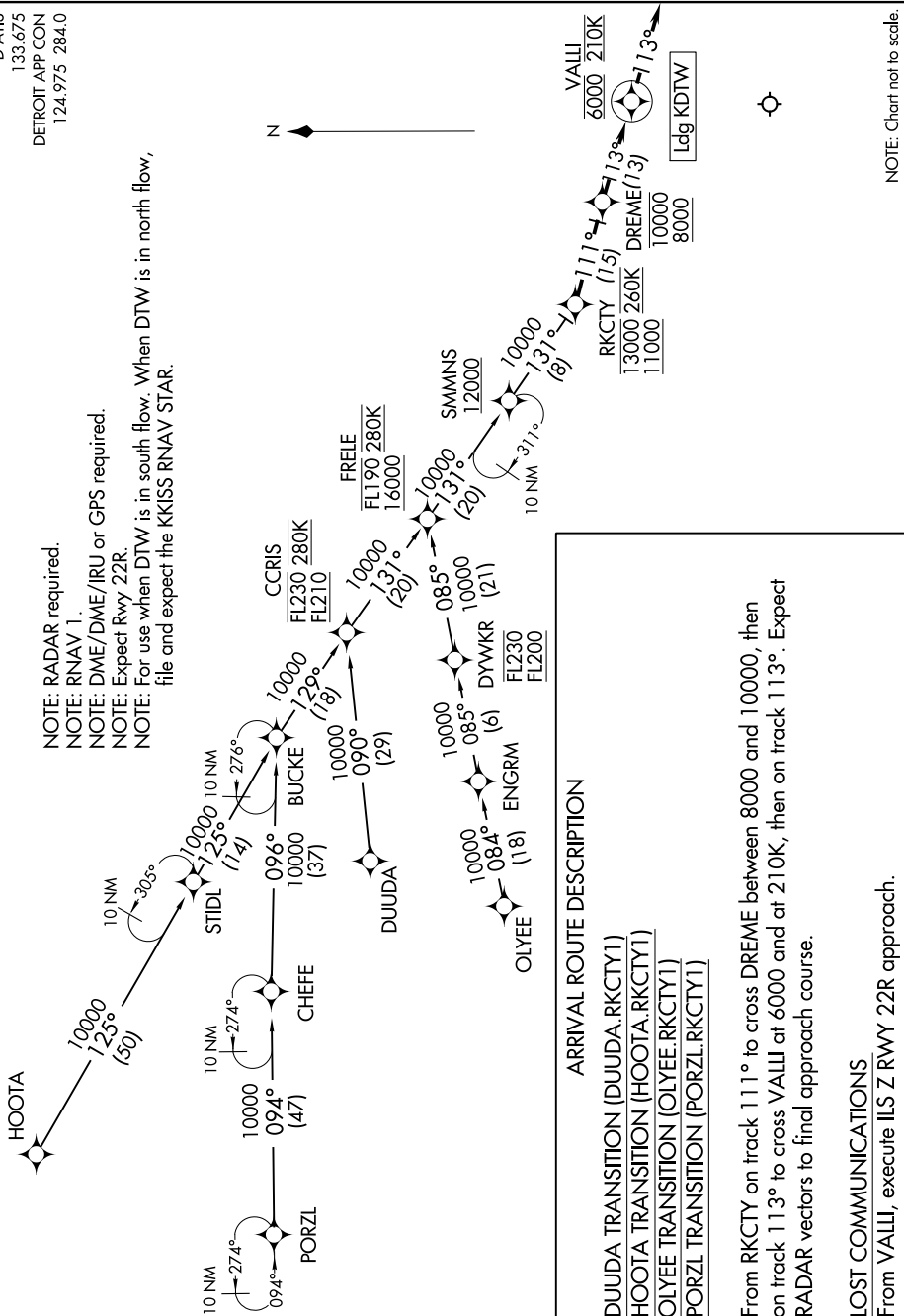


RKCTY ONE ARRIVAL (RNAV)

D-ATIS
133.675
DETROIT APP CON
124.975 284.0

NOTE: RADAR required.
NOTE: RNAV 1.
NOTE: DME/DME/IRU or GPS required.
NOTE: Expect Rwy 22R.
NOTE: For use when DTW is in south flow. When DTW is in north flow, file and expect the KKRSS RNAV STAR.



ARRIVAL ROUTE DESCRIPTION

- DUUDA TRANSITION (DUUDA.RKCTY1)
- HOOTA TRANSITION (HOOTA.RKCTY1)
- OLYEE TRANSITION (OLYEE.RKCTY1)
- PORZL TRANSITION (PORZL.RKCTY1)

From RKCTY on track 111° to cross DREME between 8000 and 10000, then on track 113° to cross VALLI at 6000 and at 210K, then on track 113°. Expect RADAR vectors to final approach course.

LOST COMMUNICATIONS

From VALLI, execute ILS Z RWY 22R approach.

NOTE: Chart not to scale.