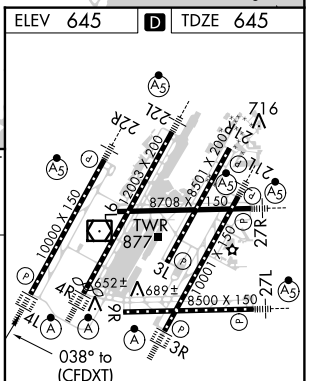
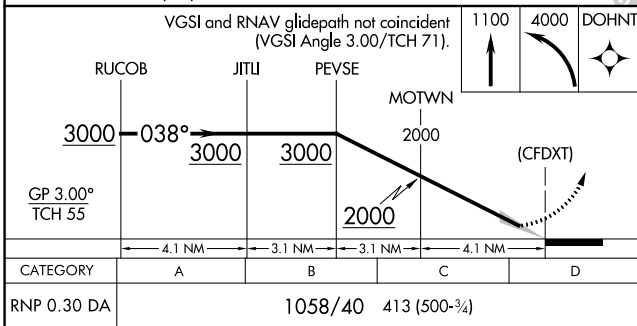
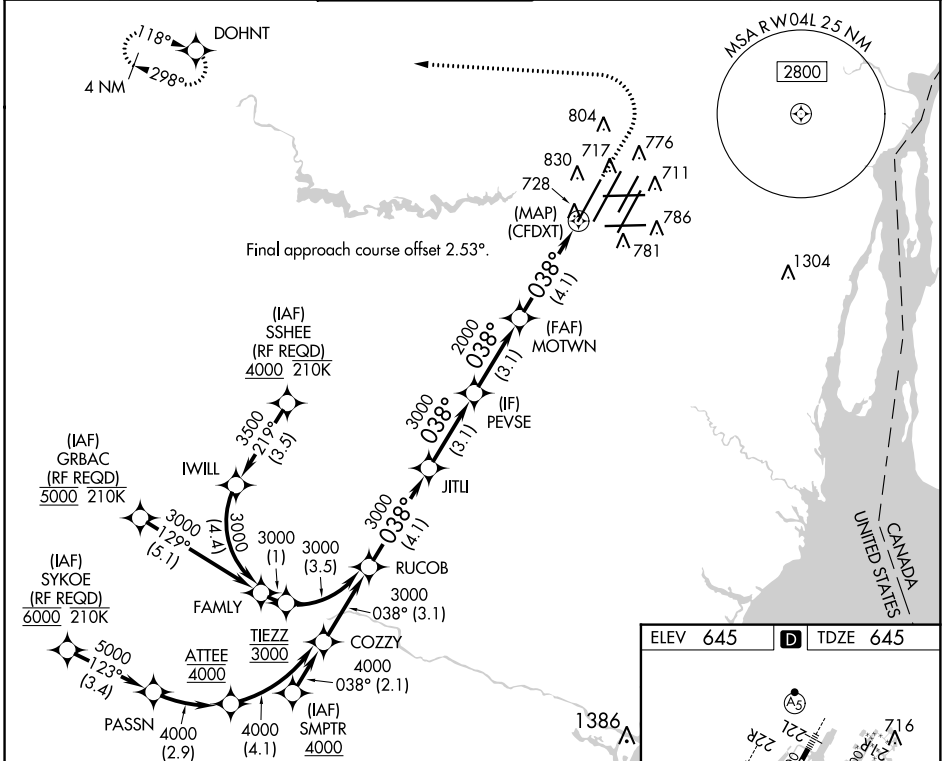


APP CRS	Rwy Idg	10000
038°	TDZE	645
	Apt Elev	645

RNAV (RNP) U RWY 4L

DETROIT METROPOLITAN WAYNE COUNTY (DTW)

RNP AR APCH.		METRO TOWER 135.0 317.725		GND CON 121.8 (NW) 119.45 (NE) 132.725 (SW) 119.25 (SE)		CLNC DEL 120.65		CPDLC
<p>▼ For uncompensated Baro-VNAV systems, procedure NA below -19°C (-2°F) or above 54°C (130°F). Simultaneous approach authorized. For inop ALS, increase RNP 0.30 DA all Cats visibility to RVR 6000.</p>				ALSF-2		MISSED APPROACH: Climb to 1100 then climbing left turn to 4000 direct DOHNT and hold.		



CATEGORY	A	B	C	D
RNP 0.30 DA	1058/40		413 (500-3/4)	

AUTHORIZATION REQUIRED

TDZ/CL Rwys 3R, 4L, 4R and 22R
REIL Rwys 3L, 9L, 9R and 21R
HIRL all Rwys

EC-1, 12 SEP 2019 to 10 OCT 2019

EC-1, 12 SEP 2019 to 10 OCT 2019