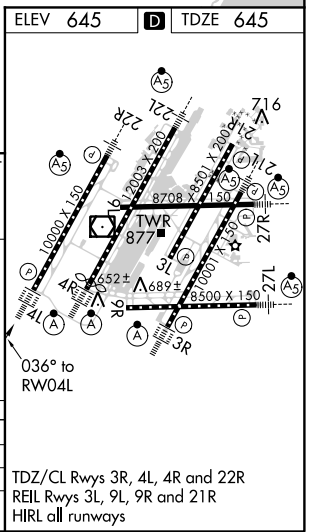
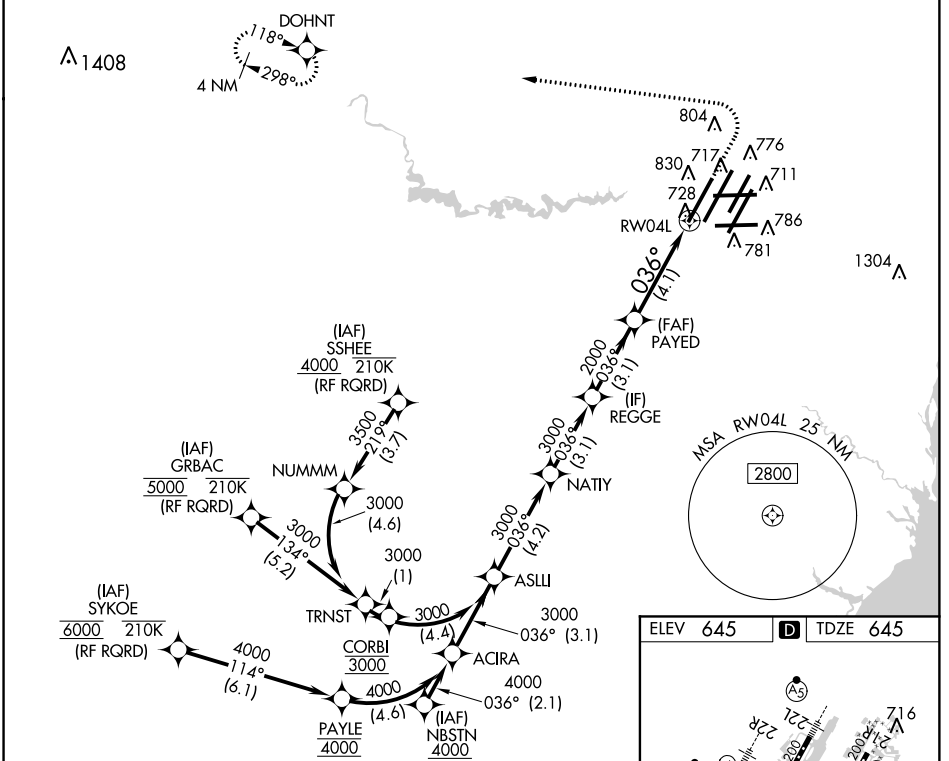


APP CRS 036°	Rwy Idg 10000
	TDZE 645
	Apt Elev 645

RNAV (RNP) X RWY 4L

DETROIT METROPOLITAN WAYNE COUNTY (DTW)

RNP AR APCH. ▼ For uncompensated Baro-VNAV systems, procedure NA below -19°C (-2°F) or above 54°C (130°F). Simultaneous approach authorized. For inop ALS, increase RNP 0.30 DA all Cats visibility to RVR 6000.		ALS-F-2 ⓐ	MISSED APPROACH: Climb to 1100 then climbing left turn to 4000 direct DOHNT and hold.		
D-ATIS 133.675	DETROIT APP CON 124.05 284.0	METRO TOWER 135.0 317.725	GND CON 121.8 (NW) 119.45 (NE) 132.725 (SW) 119.25 (SE)	CLNC DEL 120.65	CPDLC



VGSI and RNAV glidepath not coincident (VGSI Angle 3.00/TCH 71).

ASLLI	NATY	REGGE	PAYED	RW04L
3000	3000	3000	2000	
GP 3.00° TCH 55				
4.2 NM		3.1 NM	3.1 NM	4.1 NM

CATEGORY	A	B	C	D
RNP 0.15 DA		970/26	325 (400-½)	
RNP 0.30 DA		1058/40	413 (500-¾)	

AUTHORIZATION REQUIRED

EC-1, 12 SEP 2019 to 10 OCT 2019

EC-1, 12 SEP 2019 to 10 OCT 2019