

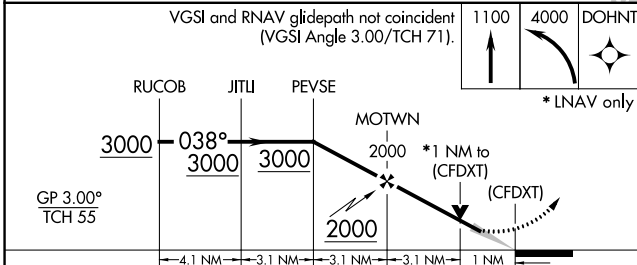
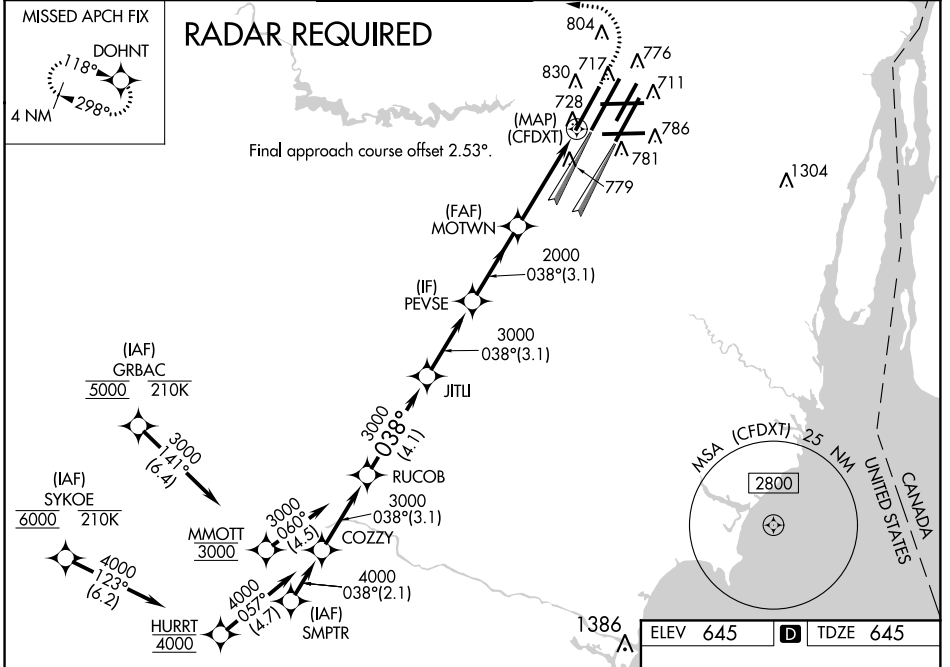
WAAS CH 82439 W04A	APP CRS 038°	Rwy Idg 10000 TDZE 645 Apt Elev 645
--	------------------------	--

RNAV (GPS) Y RWY 4L

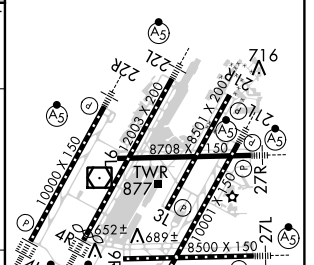
DETROIT METROPOLITAN WAYNE COUNTY (DTW)

<p>▽ For uncompensated Baro-VNAV systems, LNAV/VNAV NA below -1°C (-2°F) or above 54°C (130°F). DME/DME RNP-0.3 NA. Simultaneous approach authorized. LNAV procedure NA during simultaneous operations. Use of FD or AP providing RNAV track guidance required during simultaneous operations.</p>	<p>ALSF-2 </p>	<p>MISSED APPROACH: Climb to 1100 then climbing left turn to 4000 direct DOHNT and hold.</p>
---	--------------------	--

D-ATIS 133.675	DETROIT APP CON 124.05 284.0	METRO TOWER 135.0 317.725	GND CON 121.8 (NW) 119.45 (NE) 132.725 (SW) 119.25 (SE)	CLNC DEL 120.65	CPDLC
--------------------------	--	-------------------------------------	---	---------------------------	-------



ELEV 645	D TDZE 645
----------	-------------------



CATEGORY	A	B	C	D
LPV DA		895/24	250 (300-½)	
LNAV/VNAV DA		1068/45	423 (500-¾)	
LNAV MDA	1040/24	395 (400-½)	1040/35	395 (400-¾)
C CIRCLING	1180-1	535 (600-1)	1180-1½ 535 (600-1½)	1240-2 595 (600-2)

038° to (CFDXT)

TDZ/CL Rwys 3R, 4L, 4R and 22R
REIL Rwys 3L, 9L, 9R and 21R
HIRL all runways

EC-1, 12 SEP 2019 to 10 OCT 2019

EC-1, 12 SEP 2019 to 10 OCT 2019