

WAAS CH 99601 W22A	APP CRS 216°	Rwy Idg 12003 TDZE 637 Apt Elev 645
--	------------------------	--

RNAV (GPS) Z RWY 22L

DETROIT METROPOLITAN WAYNE COUNTY (DTW)

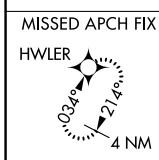
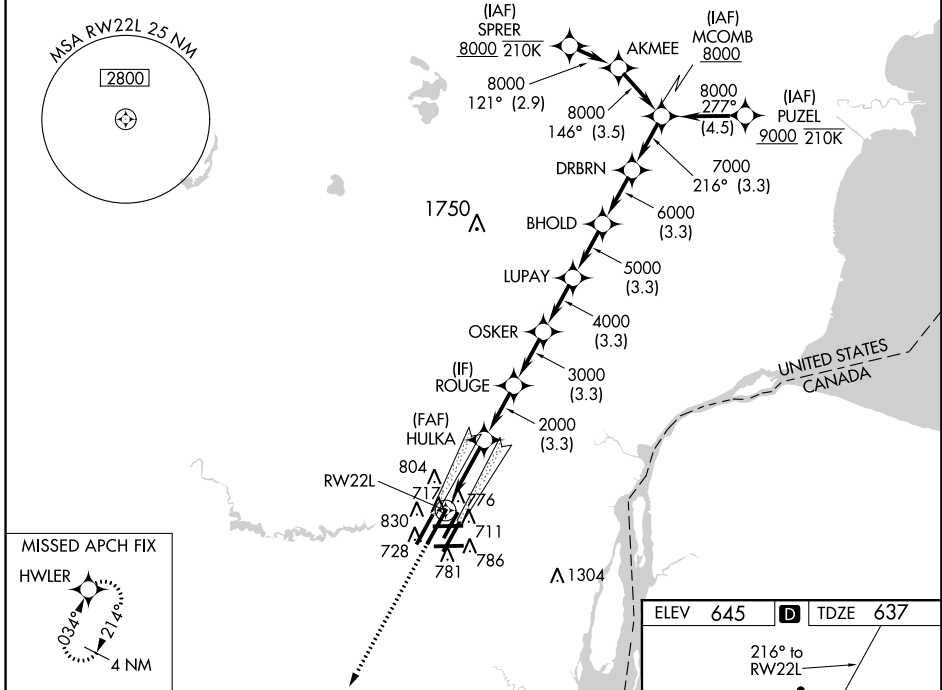
RNP APCH.

▼ For uncompensated Baro-VNAV systems, LNAV/VNAV NA below -10°C (14°F) or above 54°C (130°F). Simultaneous approach authorized. LNAV procedure NA during simultaneous operations. Use of FD or AP required during simultaneous operations. For inop ALS, increase LNAV/VNAV all Cats visibility to RVR 4500 and LNAV Cat C/D visibility to 1½ SM. #RVR 1800 authorized with use of FD or AP or HUD to DA.

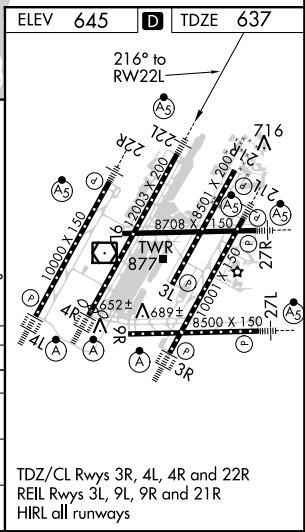


MISSED APPROACH:
Climb to 4000 direct
HWLER and hold.

D-ATIS 133.675	DETROIT APP CON 124.05 284.0	METRO TOWER 128.125 317.725	GND CON 121.8 (NW) 119.45 (NE) 132.725 (SW) 119.25 (SE)	CINC DEL 120.65	CPDLC
--------------------------	--	---------------------------------------	---	---------------------------	-------



4000	HWLER							
*LNAV only.		HULKA	ROUGE	OSKER	LUPAY	BHOLD	DRBRN	MCOMB
RW22L		2000	3000	4000	5000	6000	7000	8000
1.3 NM		3 NM	3.3 NM	3.3 NM	3.3 NM	3.3 NM	3.3 NM	3.3 NM
CATEGORY	A	B		C		D		
LPV DA#	837/24		200 (200-½)					
LNAV/VNAV DA	938/24		301 (300-½)					
LNAV MDA	1100/24 463 (500-½)		1100/50 463 (500-¾)					
CIRCLING	1180-1 535 (600-1)		1180-1½ 535 (600-½)		1240-2 595 (600-2)			



TDZ/CL Rwy 3R, 4L, 4R and 22R
REIL Rwy 3L, 9L, 9R and 21R
HIRL all runways

EC-1, 12 SEP 2019 to 10 OCT 2019

EC-1, 12 SEP 2019 to 10 OCT 2019