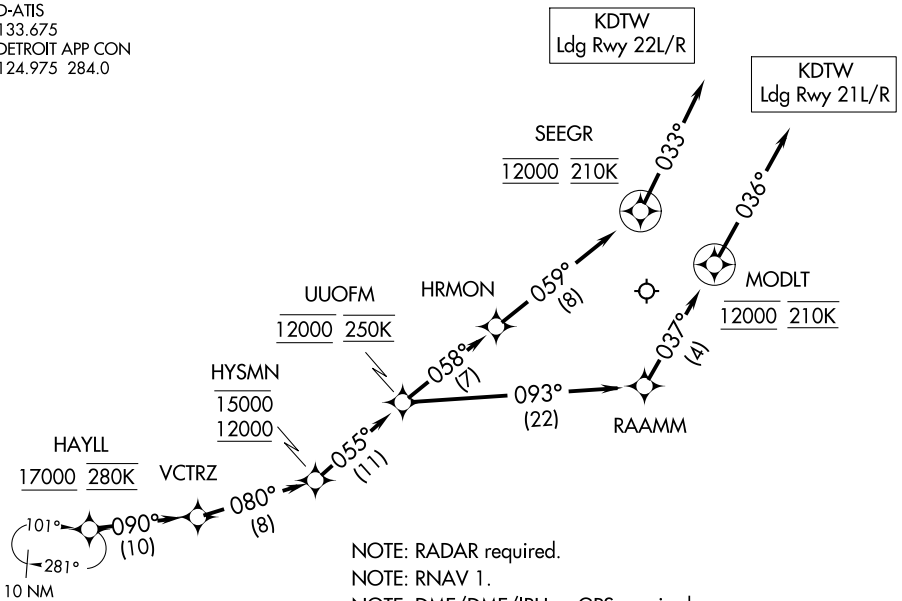


D-ATIS  
133.675  
DETROIT APP CON  
124.975 284.0



NOTE: RADAR required.  
 NOTE: RNAV 1.  
 NOTE: DME/DME/IRU or GPS required.  
 NOTE: Use Runway 22R transition or as assigned by ATC.  
 Expect runway assignment from Detroit TRACON prior to HAYMN.  
 NOTE: For use when DTW is in south flow.  
 When DTW is in north flow, file and expect the HAYLL RNAV STAR.

NOTE: Chart not to scale.

ARRIVAL ROUTE DESCRIPTION

From HAYLL on track 090° to VCTRZ, then on track 080° to cross HAYMN between 12000 and 15000, then on track 055° to cross UUOFM at 12000 and at 250K.

LANDING RWY 21L/R: From UUOFM on track 093° to RAAMM, then on track 037° to cross MODLT at 12000 and at 210K, then on track 036°. Expect RADAR vectors to final approach course.

LANDING RWY 22L/R: From UUOFM on track 058° to HRMON, then on track 059° to cross SEEGR at 12000 and at 210K, then on track 033°. Expect RADAR vectors to final approach course.