

# WNGNT ONE ARRIVAL (RNAV)

EC-1, 12 SEP 2019 to 10 OCT 2019

NOTE: RADAR required.

NOTE: RNAV 1.

NOTE: DME/DME/IRU or GPS required.

NOTE: Use Rwy 3R transition or as assigned by ATC.

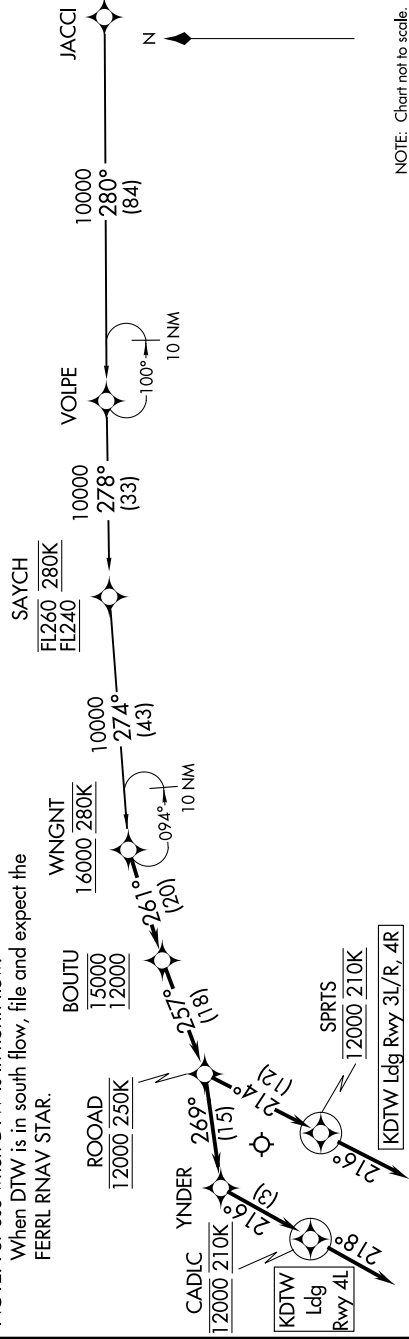
NOTE: Expect runway assignment from DETROIT TRACON prior to ROOAD.

NOTE: Jet aircraft descend via Mach number until intercepting 280K. Maintain 280K until slowed by the STAR.

NOTE: For use when DTW is in north flow.

NOTE: When DTW is in south flow, file and expect the FERRL RNAV STAR.

D-ATIS 133.675  
DETROIT APP CON  
126.225 284.0



NOTE: Chart not to scale.

## ARRIVAL ROUTE DESCRIPTION

### JACCI TRANSITION (JACCI.WNGNT1)

From WNGNT on track 261° to cross BOUTU between 12000 and 15000, then on track 257° to cross ROOAD at 12000 and at 250K. LANDING RUNWAYS 3L/R, 4R: From ROOAD on track 214° to cross SPRTS at 12000 and at 210K, then on track 216°. Expect RADAR vectors to final approach course.

LANDING RUNWAY 4L: From ROOAD on track 269° to YNDER, then on track 216° to cross CADLW at 12000 and at 210K, then on track 218°. Expect RADAR vectors to final approach course.

# WNGNT ONE ARRIVAL (RNAV)

EC-1, 12 SEP 2019 to 10 OCT 2019