

VOR/DME LRP <b>117.3</b> Chan <b>120</b>	APP CRS <b>290°</b>	Rwy Idg TDZE <b>308</b> Apt Elev <b>310</b>	<b>8129</b>
--	------------------------	---	-------------

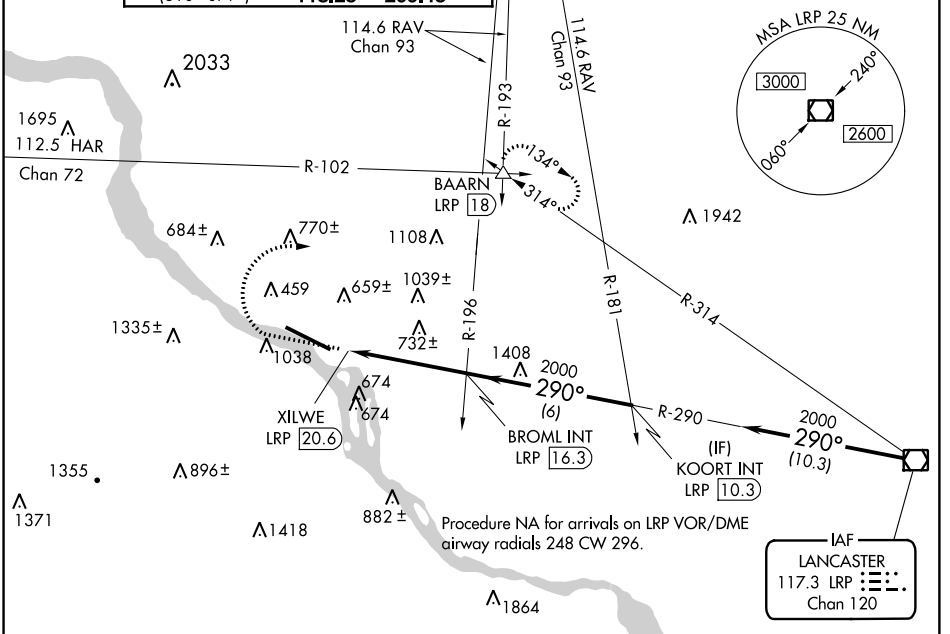
# VOR RWY 31

HARRISBURG INTL (MDT)

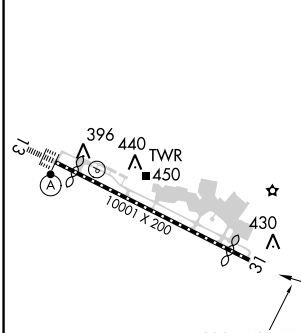
**V** Circling NA south of Rwy 13-31. Rwy 31 helicopter visibility reduction below  $\frac{3}{4}$  SM NA.

**MISSED APPROACH:** Climb to 1500 then climbing right turn to 3000 on heading 090° and RAV VORTAC R-193 to BAARN INT/LRP 18 DME and hold.

ATIS <b>118.8</b>	HARRISBURG APP CON (080°-179°) <b>126.45 281.525</b> (180°-309°) <b>124.1 273.525</b> (310°-079°) <b>118.25 269.45</b>	HARRISBURG INTL TOWER <b>124.8 269.35</b>	GND CON <b>121.7 348.6</b>
----------------------	---	--	-------------------------------



ELEV 310	<b>D</b>	TDZE 308
----------	----------	----------



TDZ/CL Rwy 13 REIL Rwy 31 HIRL Rwy 13-31					
FAF to MAP 4.3 NM					
Knots	60	90	120	150	180
Min:Sec	4:18	2:52	2:09	1:43	1:26

	1500	3000	RAV R-193	BAARN	BROML INT LRP 16.3	KOORT INT LRP 10.3
	↑	hdg 090°		△		
	XILWE LRP 20.6		2000		290° 2000	
	0.9		4.3 NM		6 NM	
CATEGORY	A		B		C	
S-31	1160/55 852 (900-1)		1160/60 852 (900-1¼)		1160-2½ 852 (900-2½)	
CIRCLING	1160-1¼		850 (900-1¼)		1160-2½ 850 (900-2½)	
	1160-2¾ 850 (900-2¾)					

# VOR RWY 31

NE-4, 12 SEP 2019 to 10 OCT 2019

NE-4, 12 SEP 2019 to 10 OCT 2019