

(BLTWY6.BLTWY) 19115

AL-197 (FAA)

ELLINGTON (EFD)

HOUSTON, TEXAS

# BLTWY SIX DEPARTURE (RNAV)

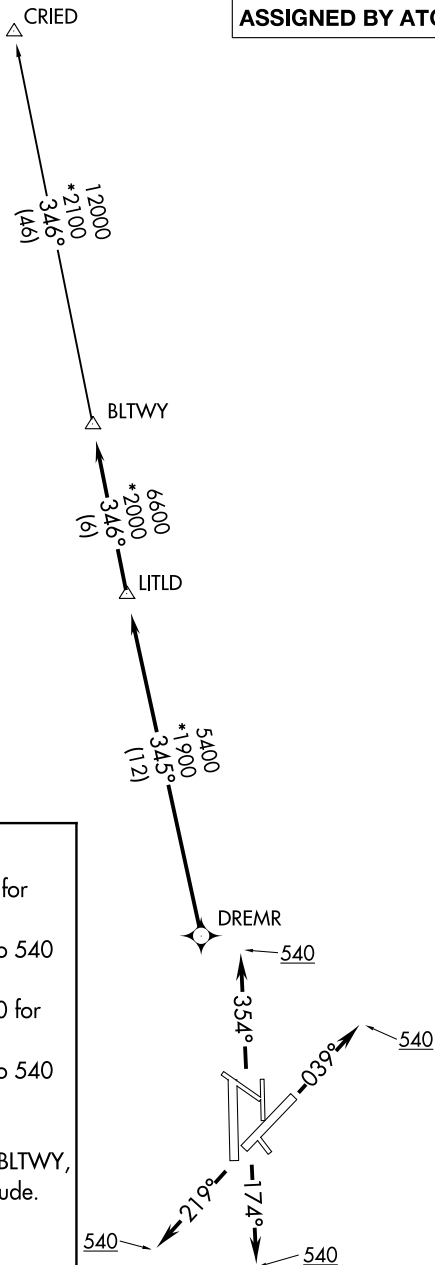
ATIS  
 135.575 269.9  
 GND CON  
 121.6 275.8  
 ELLINGTON TOWER  
 126.05 253.5  
 HOUSTON DEP CON  
 134.45 284.0

**TOP ALTITUDE:  
 ASSIGNED BY ATC**

NOTE: RADAR required.  
 NOTE: DME/DME/IRU or GPS required.  
 NOTE: RNAV 1.

### TAKEOFF MINIMUMS

Rwys 4, 17L/R, 22, 35L/R:  
 Standard with minimum climb of 500' per NM to 540.



### DEPARTURE ROUTE DESCRIPTION

TAKEOFF RWY 4: Climb heading 039° to 540 for RADAR vectors to DREMR, thence . . . .  
 TAKEOFF RWYS 17L/R: Climb heading 174° to 540 for RADAR vectors to DREMR, thence . . . .  
 TAKEOFF RWY 22: Climb heading 219° to 540 for RADAR vectors to DREMR, thence . . . .  
 TAKEOFF RWYS 35L/R: Climb heading 354° to 540 for RADAR vectors to DREMR, thence . . . .

...on track 345° to LITLD, then on track 346° to BLTWY, then on (transition). Maintain ATC assigned altitude. Expect filed altitude 10 minutes after departure.

CRIED TRANSITION (BLTWY6.CRIED)

NOTE: Chart not to scale.

# BLTWY SIX DEPARTURE (RNAV)

(BLTWY6.BLTWY) 25APR19

HOUSTON, TEXAS  
ELLINGTON (EFD)

SC-5, 12 SEP 2019 to 10 OCT 2019

SC-5, 12 SEP 2019 to 10 OCT 2019