

# EL DORADO NINE DEPARTURE

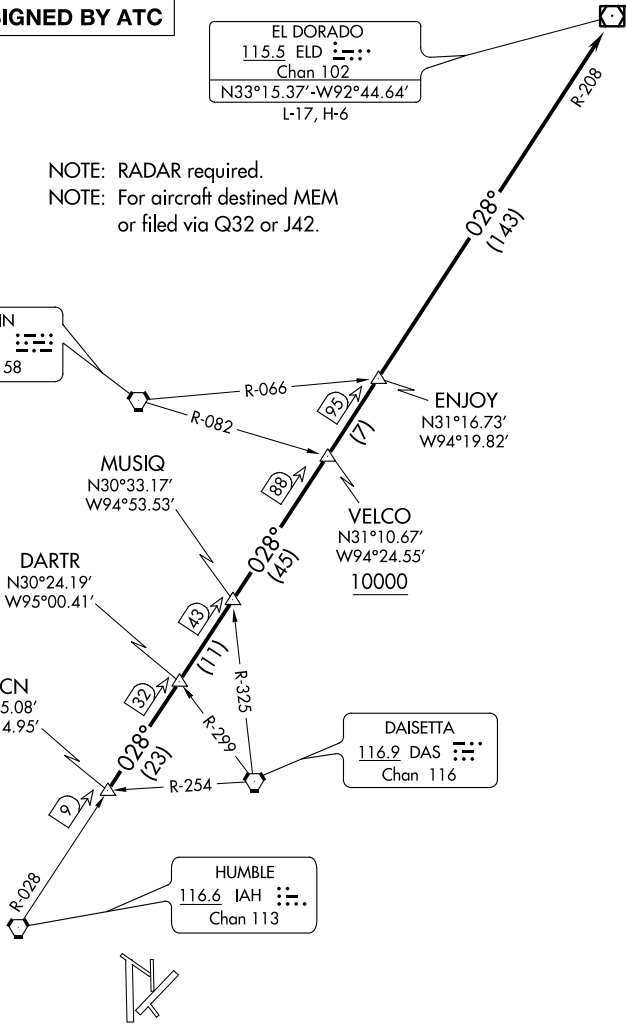
ATIS  
135.575 269.9  
GND CON  
121.6 275.8  
ELLINGTON TOWER  
126.05 253.5  
HOUSTON DEP CON  
134.45 284.0

**TOP ALTITUDE:  
ASSIGNED BY ATC**

EL DORADO  
115.5 ELD   
Chan 102  
N33°15.37'-W92°44.64'  
L-17, H-6

NOTE: RADAR required.  
NOTE: For aircraft destined MEM  
or filed via Q32 or J42.

LUFKIN  
112.1 LFK   
Chan 58



### TAKEOFF MINIMUMS

Rwys 4, 17L/R, 35L/R: Standard.

Rwy 22: 200-1¼ or standard with minimum  
climb of 214' per NM to 300 or alternatively with  
standard takeoff minimums and a normal 200' per  
NM climb gradient, takeoff must occur no later than  
1400' prior to DER.

NOTE: Chart not to scale.

(NARRATIVE ON FOLLOWING PAGE)

SC-5, 12 SEP 2019 to 10 OCT 2019

SC-5, 12 SEP 2019 to 10 OCT 2019

# EL DORADO NINE DEPARTURE

(ELD9.ELD) 22JUN17