

HI-ILS Y or LOC Y RWY 35L

LOC I-EFD 111.1	APCH CRS 354°	Rwy Idg TDZE Arprt Elev 9001 28 33
---------------------------	-------------------------	--

JAL-197 [USAF]

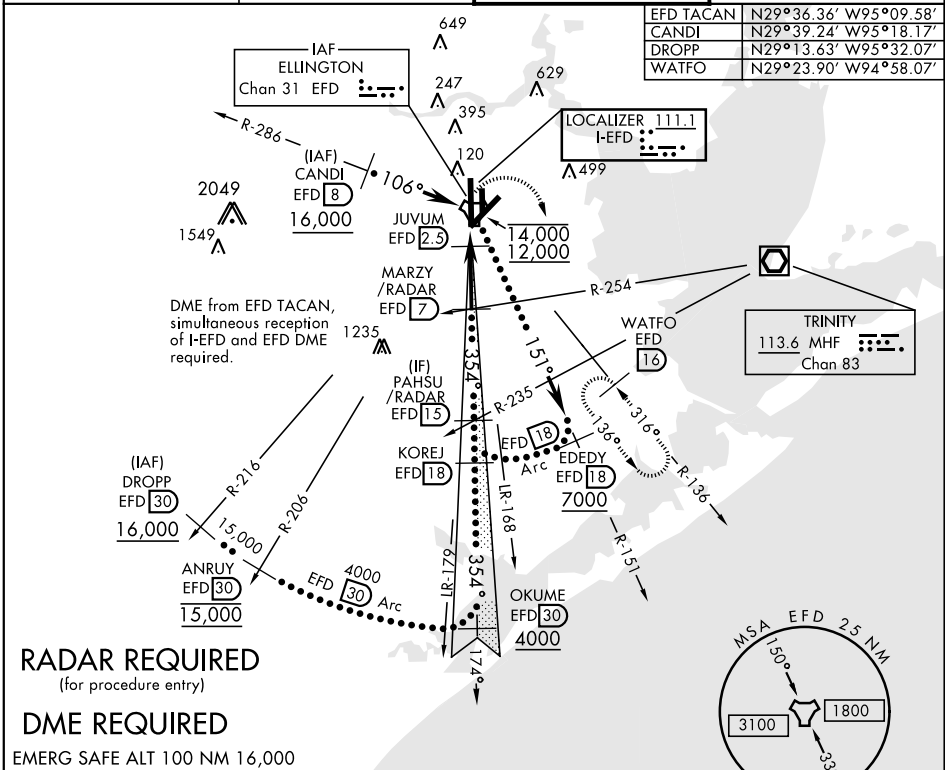
HOUSTON/ELLINGTON (KEFD)

* When ALS inop, increase CAT CDE RVR to 40.
 ** Circling not authorized W of rwy 17L-35R

MALSF
 MISSED APPROACH: Climb to 500 then climbing right turn to 3100 via EFD TACAN R-136 to WATFO INT/EFD 16 DME and hold.

ATIS 135.575 269.9	HOUSTON APP CON 134.45 284.0	ELLINGTON TOWER 126.05 253.5	GND CON 121.6 275.8
------------------------------	--	--	-------------------------------

EFD TACAN	N29°36.36' W95°09.58'
CANDI	N29°39.24' W95°18.17'
DROPP	N29°13.63' W95°32.07'
WATFO	N29°23.90' W94°58.07'



RADAR REQUIRED
(for procedure entry)

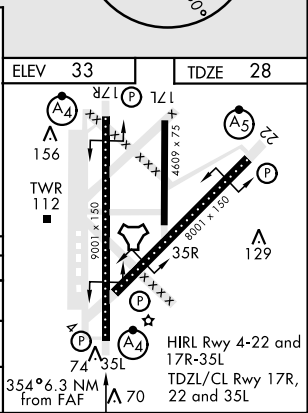
DME REQUIRED

EMERG SAFE ALT 100 NM 16,000



ELEV 33	TDZE 28
---------	---------

CATEGORY	C	D	E
S-ILS 35L	228/40	200	(200-¾)
S-LOC 35L*	440/50	412	(500-1)
CIRCLING**	580-1½ 547 (600-1½)	640-2 607 (700-2)	700-2¼ 667 (700-2¼)



HI-ILS Y or LOC Y RWY 35L

SC-5, 12 SEP 2019 to 10 OCT 2019

SC-5, 12 SEP 2019 to 10 OCT 2019