

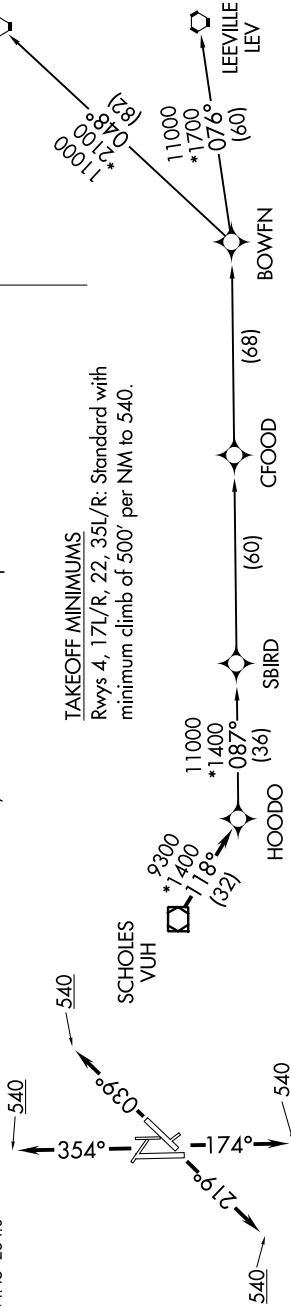
HOODO SIX DEPARTURE (RNAV)

SC-5, 12 SEP 2019 to 10 OCT 2019

ATIS 135.575 269.9
GND CON 121.6 275.8
ELLINGTON TOWER 126.05 253.5
HOUSTON DEP CON 134.45 284.0

NOTE: RNAV 1.
NOTE: RADAR required.
NOTE: ATC assigned only.
NOTE: DME/DME/IRU or GPS required.
NOTE: For non-GPS equipped aircraft, LCH, ILLA, TBD, and LEV DME's must be operational.

TAKEOFF MINIMUMS
Rwys 4, 17L/R, 22, 35L/R: Standard with minimum climb of 500' per NM to 540.



NOTE: Chart not to scale.

DEPARTURE ROUTE DESCRIPTION

- TAKEOFF RWY 4:** Climb heading 039° to 540, for RADAR vectors to VUH VOR/DME, thence
- TAKEOFF RWYS 17L/R:** Climb heading 174° to 540, for RADAR vectors to VUH VOR/DME, thence
- TAKEOFF RWY 22:** Climb heading 219° to 540, for RADAR vectors to VUH VOR/DME, thence
- TAKEOFF RWYS 35L/R:** Climb heading 354° to 540, for RADAR vectors to VUH VOR/DME, thence

. . . . on track 118° to HOODO, then on (transition). Maintain ATC assigned altitude. Expect filed altitude 10 minutes after departure.

- BOWFN TRANSITION (HOODO6.BOWFN)
- CFOOD TRANSITION (HOODO6.CFOOD)
- HARVEY TRANSITION (HOODO6.HRV)
- LEEVILLE TRANSITION (HOODO6.LEV)
- SBIRD TRANSITION (HOODO6.SBIRD)

SC-5, 12 SEP 2019 to 10 OCT 2019