


LOC I-FNF 110.1	APP CRS 219°	Rwy Idg 8001
		TDZE 31
		Apt Elev 33

ILS Z or LOC Z RWY 22

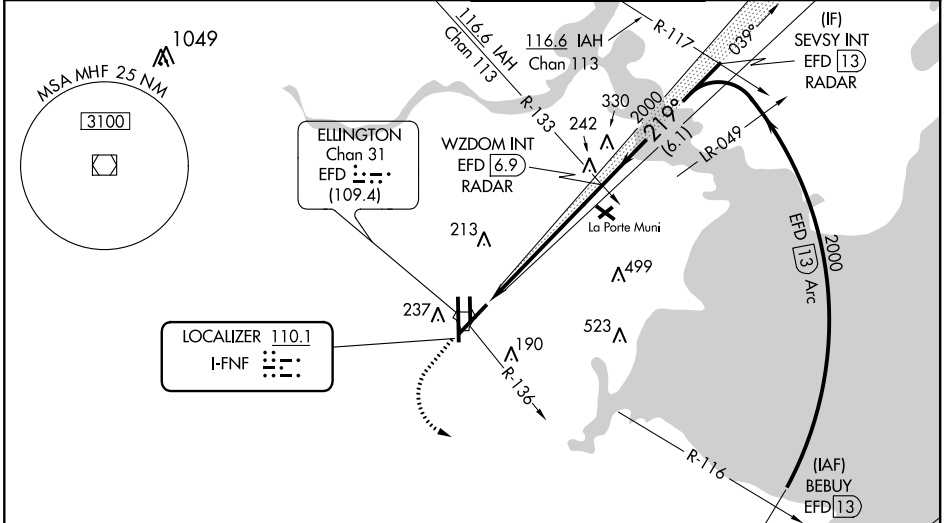
ELLINGTON (EFD)

RADAR required for procedure entry.

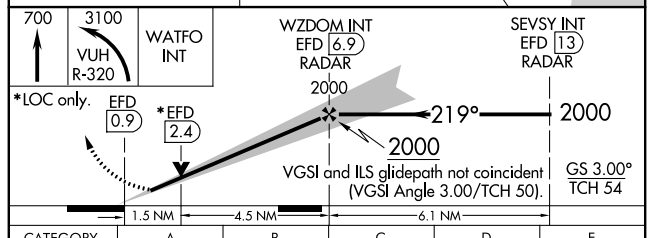
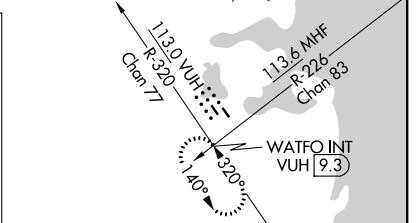
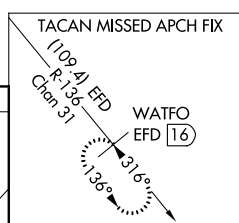
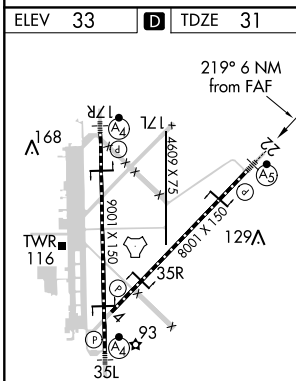
MAJSLR  MISSED APPROACH: Climb to 700 then climbing left turn to 3100 on VUH VOR/DME R-320 to WATFO INT/VUH 9.3 DME and hold. (TACAN aircraft climb to 700 then climbing left turn to 3100 on EFD TACAN R-136 to WATFO/EFD 16 DME and hold southeast, left turn, 316° inbound.)

⚠ Circling NA west of Rwy 17R-35L. DME from EFD TACAN. Simultaneous reception of I-FNF and EFD DME required. For inop ALS, increase S-ILS 22 Cat E visibility to RVR 4000 and S-LOC 22 Cat E visibility to 1½ SM.

ATIS 135.575 269.9	HOUSTON APP CON 134.45 284.0	ELLINGTON TOWER 126.05 253.5	GND CON 121.6 275.8
------------------------------	--	--	-------------------------------



ELEV 33	D	TDZE 31
---------	----------	---------



HIRL Rwy 4-22 and 17R-35L TDZ/CL Rwy 17R, 22 and 35L FAF to MAP 6 NM					
Knots	60	90	120	150	180
Min:Sec	6:00	4:00	3:00	2:24	2:00
C CIRCLING	560-1	527 (600-1)	580-1½ 547 (600-1½)	640-2 607 (700-2)	700-2¼ 667 (700-2¼)

SC-5, 12 SEP 2019 to 10 OCT 2019

SC-5, 12 SEP 2019 to 10 OCT 2019