

LOC I-EDF 111.1	APP CRS 354°	Rwy Idg TDZE Apt Elev 9001 28 33
---------------------------	------------------------	--

ILS Z or LOC Z RWY 35L

ELLINGTON (EFD)

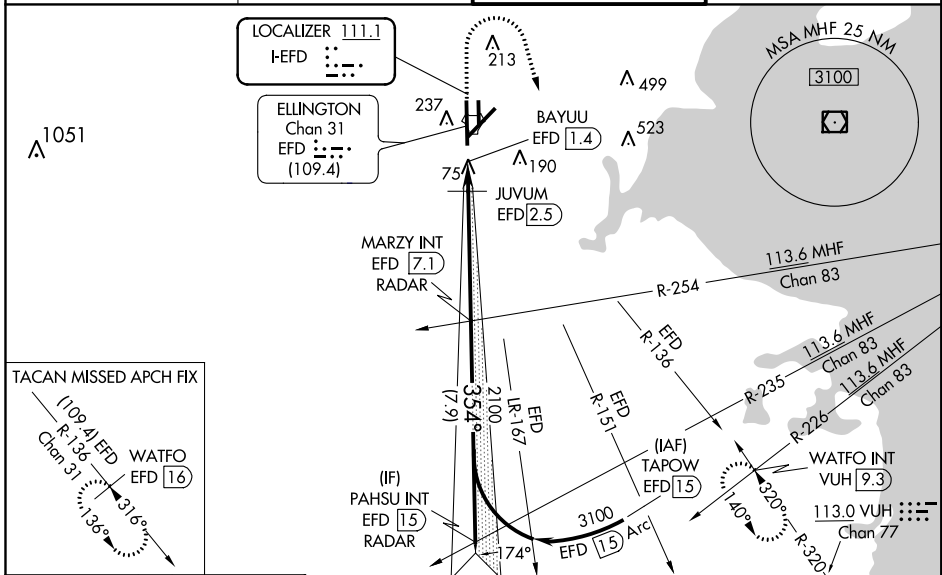
RADAR required for procedure entry.

⚠ Circling NA west of Rwy 17R-35L. DME from EFD TACAN. Simultaneous reception of I-EDF and EFD DME required. Inop table does not apply to S-ILS 35L. For inop ALS, increase S-LOC 35L Cat C/D/E visibility to 1½ SM. For inop ALS when using JUVUM fix minimums, increase S-LOC 35L Cat C/D/E visibility to RVR 6000.

MALSF
⚠

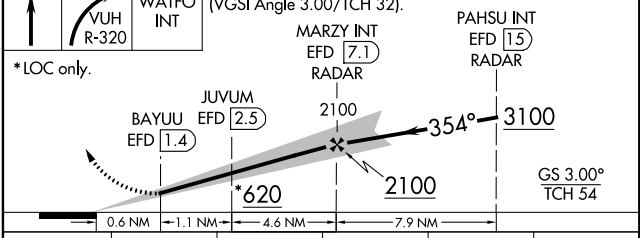
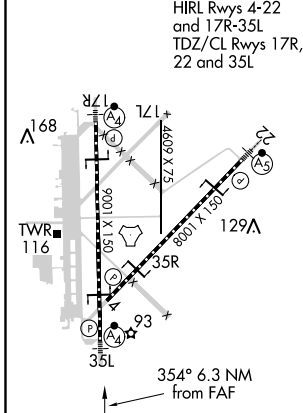
MISSED APPROACH: Climb to 700 then climbing right turn to 3100 on VUH VOR/DME R-320 to WATFO INT/VUH 9.3 DME and hold. (TACAN aircraft climb to 700 then climbing right turn to 3100 on EFD TACAN R-136 to WATFO/EFD 1.6 DME and hold southeast, left turn, 316° inbound).

ATIS 135.575 269.9	HOUSTON APP CON 134.45 284.0	ELLINGTON TOWER 126.05 253.5	GND CON 121.6 275.8
------------------------------	--	--	-------------------------------



ELEV 33	D TDZE 28
---------	------------------

700 3100 VGS1 and ILS glidepath not coincident (VGS1 Angle 3.00/TCH 32).
 WATFO INT PAHSU INT
 *LOC only.



CATEGORY	A	B	C	D	E
S-ILS 35L	228/40 200 (200-¾)				
S-LOC 35L	620/40	592 (600-¾)	620-1⅜		592 (600-1⅜)
C CIRCLING	620-1	587 (600-1)	620-1¼ 587 (600-1¼)	640-2 607 (700-2)	700-2¼ 667 (700-2¼)
JUVUM FIX MINIMUMS (DME REQUIRED)					
S-LOC 35L	440/40	412 (500-¾)	440/50		412 (500-1)
C CIRCLING	500-1	467 (500-1)	580-1½ 547 (600-1½)	640-2 607 (700-2)	700-2¼ 667 (700-2¼)

FAF to MAP 5.7 NM					
Knots	60	90	120	150	180
Min:Sec	5:42	3:48	2:51	2:17	1:54