

# KARR FIVE DEPARTURE (RNAV)

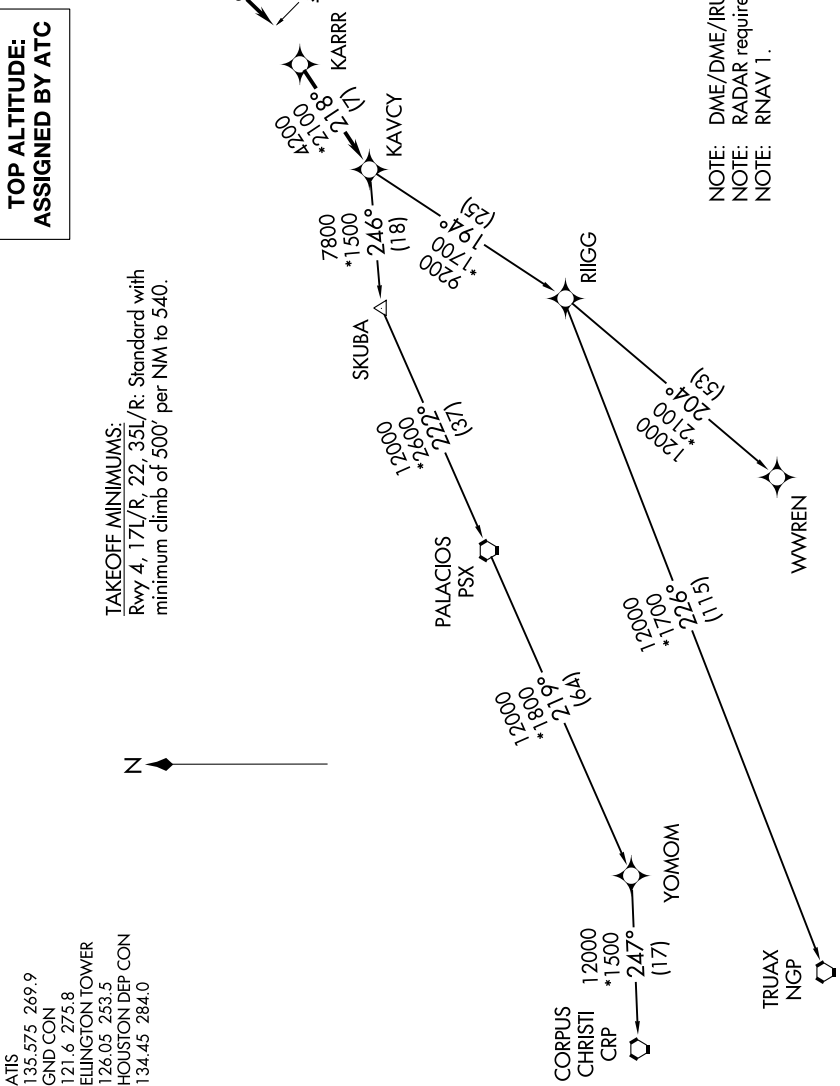
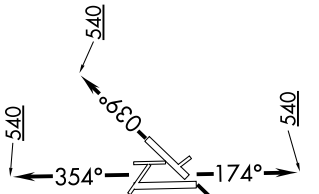
SC-5, 12 SEP 2019 to 10 OCT 2019

ATIS 135.575 269.9  
GND CON 121.6 275.8  
ELLINGTON TOWER 126.05 253.5  
HOUSTON DEP CON 134.45 284.0

### TAKEOFF MINIMUMS:

Rwy 4, 17L/R, 22, 35L/R: Standard with minimum climb of 500' per NM to 540.

### TOP ALTITUDE: ASSIGNED BY ATC



NOTE: DME/DME/IRU or GPS required.  
NOTE: RADAR required.  
NOTE: RNAV 1.

(NARRATIVE ON FOLLOWING PAGE)

NOTE: Chart not to scale.

SC-5, 12 SEP 2019 to 10 OCT 2019