


TACAN EFD Chan 31	APP CRS 226°	Rwy Idg TDZE 31 Apt Elev 33
-----------------------------	------------------------	---

TACAN RWY 22

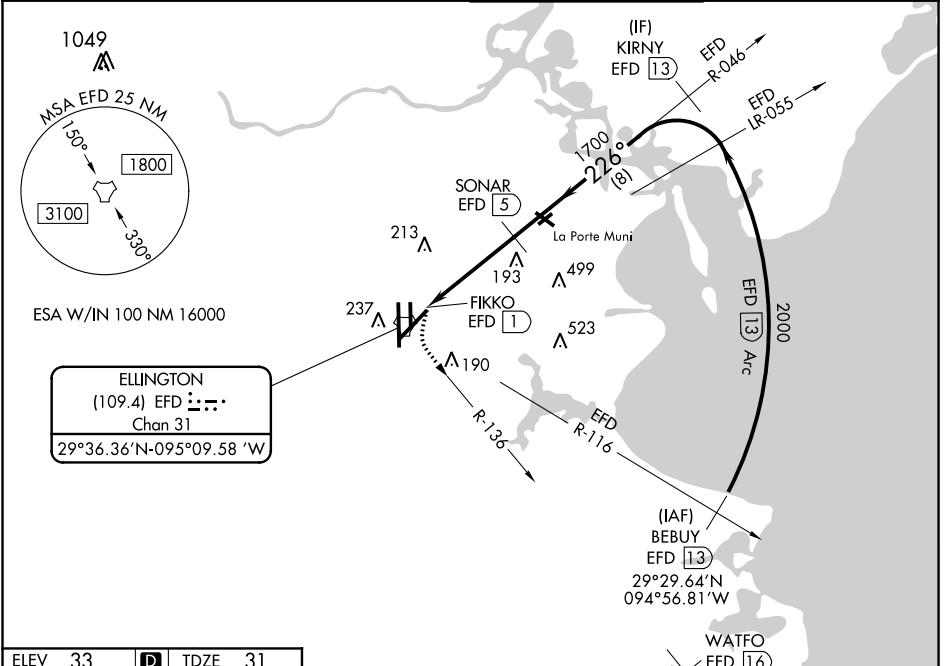
ELLINGTON (EFD)


∇ Circling NA west of Rwy 17R-35L. When ALS inop, increase S-22
△ NA Cat A/B visibility to RVR 5500 and Cat C/D/E to 1 3/8 miles.

MALSR 

MISSED APPROACH: Climbing left turn to 3100 on EFD TACAN R-136 to WATFO/EFD 16 DME and hold.

ATIS 135.575 269.9	HOUSTON APP CON 134.45 284.0	ELLINGTON TOWER 126.05 253.5	GND CON 121.6 275.8
------------------------------	--	--	-------------------------------

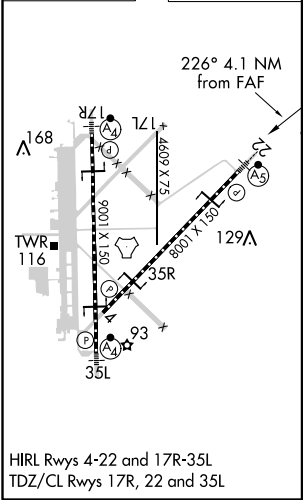


ELLINGTON
(109.4) EFD 
Chan 31
29°36.36'N-095°09.58'W

SC-5, 12 SEP 2019 to 10 OCT 2019

SC-5, 12 SEP 2019 to 10 OCT 2019

ELEV 33	D	TDZE 31
---------	----------	---------



RADAR REQUIRED

3100 EFD R-136 WATFO EFD 16 VGSI and descent angles not coincident (VGSI Angle 3.00/TCH 50).
 Cat D/E VDA not for civil use.

KIRNY EFD 13

SONAR EFD 5

FIKKO EFD 1

2000

1700

226°

3.69° TCH 55

0.2 1.2 2.7 NM 8 NM

CATEGORY	A	B	C	D	E
S-22	500/24	469 (500-1/2)	500/50 469 (500-1)		
CIRCLING	500-1	467 (500-1)	500-1 1/2 467 (500-1 1/2)	600-2 567 (600-2)	660-2 1/4 627 (700-2 1/4)