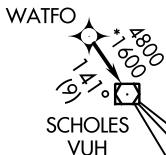
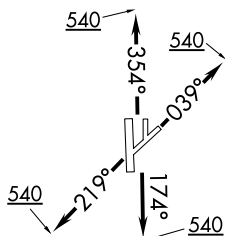


WATFO FIVE DEPARTURE (RNAV)

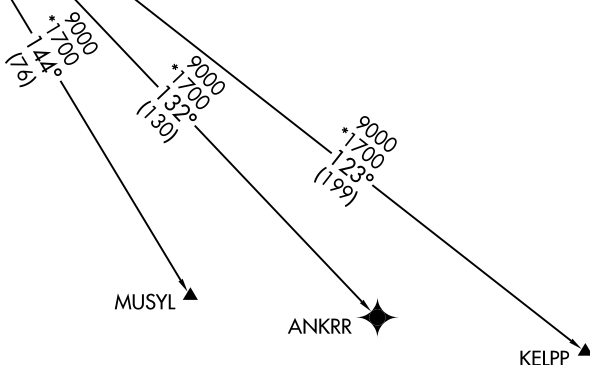
**TOP ALTITUDE:
ASSIGNED BY ATC**

ATIS
135.575 269.9
GND CON
121.6 275.8
ELLINGTON TOWER
126.05 253.5
HOUSTON DEP CON
134.45 284.0



TAKEOFF MINIMUMS:
Rwy 4, 17L/R, 22, 35L/R: Standard with minimum climb of 500' per NM to 540.

NOTE: GPS required.
NOTE: RADAR required.
NOTE: RNAV 1.



NOTE: Chart not to scale.



DEPARTURE ROUTE DESCRIPTION

TAKEOFF RWY 4: Climb on heading 039° to 540, for RADAR vectors to WATFO, thence. . . .

TAKEOFF RWYS 17L/R: Climb on heading 174° to 540, for RADAR vectors to WATFO, thence. . . .

TAKEOFF RWY 22: Climb on heading 219° to 540, for RADAR vectors to WATFO, thence. . . .

TAKEOFF RWYS 35L/R: Climb on heading 354° to 540, for RADAR vectors to WATFO, thence. . . .

. . . on track 141° to VUH VOR/DME, then on (transition). Maintain ATC assigned altitude. Expect filed altitude 10 minutes after departure.

ANKRR TRANSITION (WATFO5.ANKRR)
KELPP TRANSITION (WATFO5.KELPP)
MUSYL TRANSITION (WATFO5.MUSYL)