

TCHDN TWO ARRIVAL

Transition Routes

HOUSTON, TEXAS

HOUSTON APP CON
 119.175 291.675
 WILLIAM P HOBBY D-ATIS
 124.6
 ELLINGTON ATIS
 135.575 269.9

EAGLE LAKE
 116.4 ELA :---
 Chan 111

SAN ANTONIO
 116.8 SAT :---
 Chan 115
 N29°38.64'
 W98°27.68'
 L-19, H-7

DUUDE
 N29°09.79'
 W96°28.77'

116.6 IAH
 R-221
 Chan 113

117.1 HUB
 Chan 118
 See following page for arrival routes.

BELLR
 N29°19.49'
 W096°05.32'
VERTICAL NAVIGATION PLANNING INFORMATION TURBOJET:
 Expect 12000 250K

PALACIOS
 117.3 PSX :---
 Chan 120
 N28°45.87'
 W96°18.37'
 L-20-21, H-7

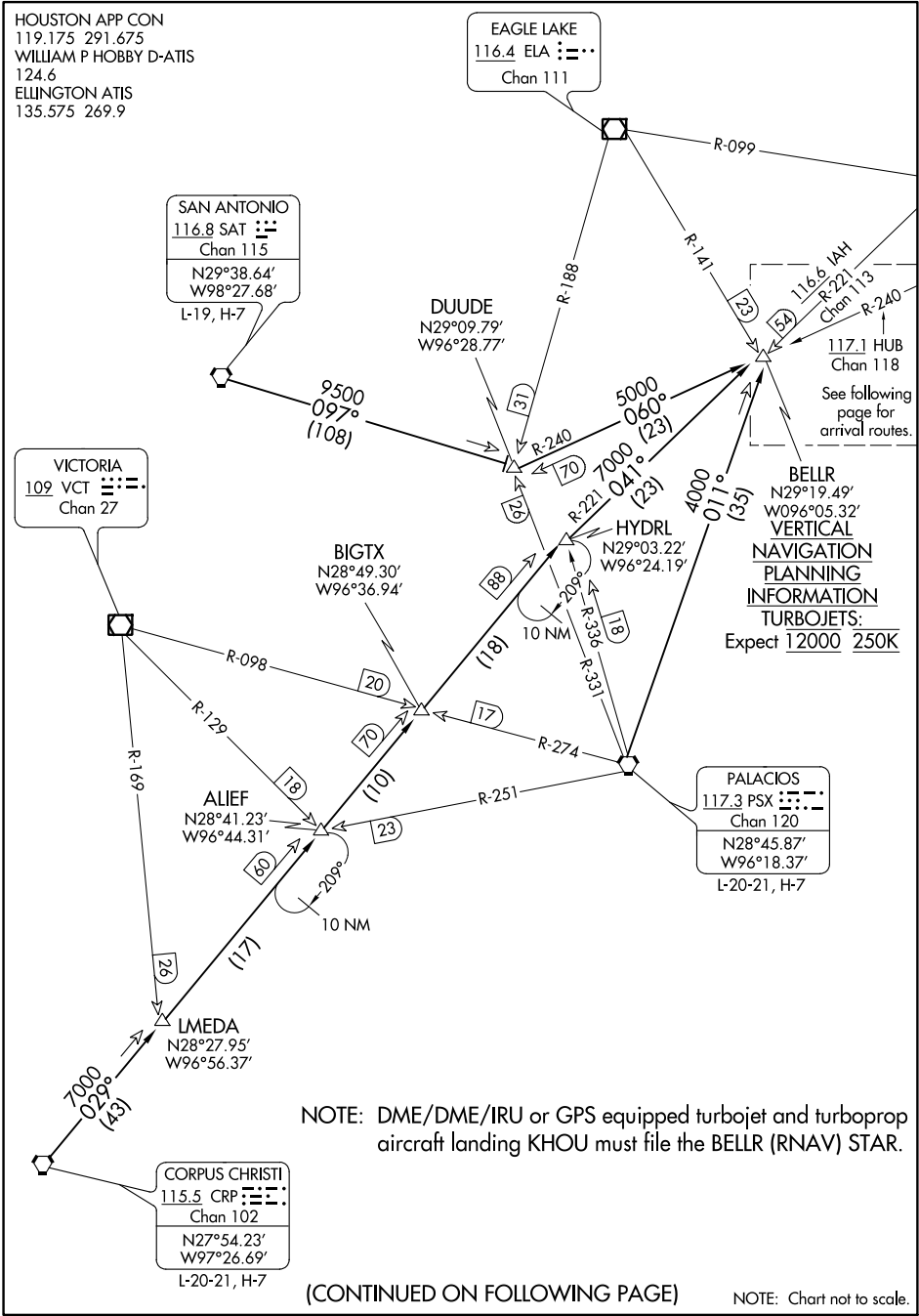
VICTORIA
 109 VCT :---
 Chan 27

BIGTX
 N28°49.30'
 W96°36.94'

ALIEF
 N28°41.23'
 W96°44.31'

LMEDA
 N28°27.95'
 W96°56.37'

CORPUS CHRISTI
 115.5 CRP :---
 Chan 102
 N27°54.23'
 W97°26.69'
 L-20-21, H-7



NOTE: DME/DME/IRU or GPS equipped turbojet and turboprop aircraft landing KHOU must file the BELLR (RNAV) STAR.

(CONTINUED ON FOLLOWING PAGE)

NOTE: Chart not to scale.

SC-5, 12 SEP 2019 to 10 OCT 2019

SC-5, 12 SEP 2019 to 10 OCT 2019

TCHDN TWO ARRIVAL

Transition Routes

HOUSTON, TEXAS