

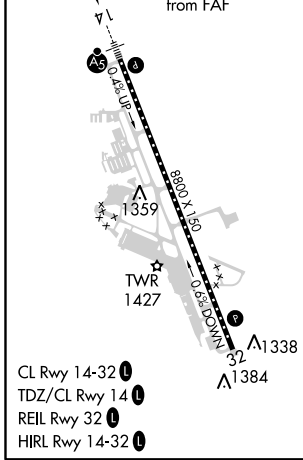
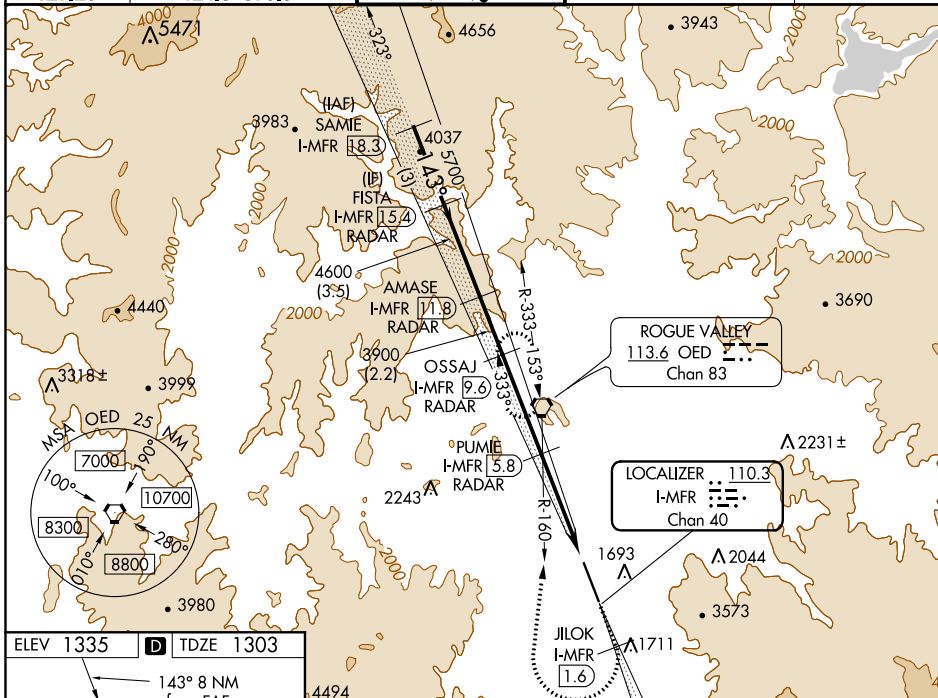
LOC/DME I-MFR	APP CRS	Rwy Idg	8800
110.3	143°	TDZE	1303
Chan 40		Apt Elev	1335

ILS or LOC RWY 14

ROGUE VALLEY INTL-MEDFORD (MFR)

DME required. DME or RADAR required for procedure entry.	MALSR	MISSED APPROACH: Climb to 6600 on I-MFR SE course to JILOK/I-MFR 1.6 DME and climbing right turn on heading 350° and on OED VORTAC R-160 to OED VORTAC and hold, continue climb-in-hold to 6600. #Missed approach requires minimum climb of 331 feet per NM to 4100.
<p>⚠ Circling NA for Cats C and D northeast of Rwy 14-32.</p> <p>⚠ When Medford altimeter setting not received, procedure NA. For inop ALS, increase S-ILS 14 visibility to 1½ SM, increase S-LOC 14# Cats C and D visibility to RVR 5500, increase S-LOC 14 Cats C and D visibility to 2½ SM.</p>		

ATIS	CASCADE APP CON*	MEDFORD TOWER*	GND CON	UNICOM
127.25	124.3 379.9	119.4 (CTAF) 1257.8	121.8	122.95



VGSI and ILS glidepath not coincident (VGSI Angle 3.00/TCH 73).

SAMIE I-MFR 18.3	FISTA I-MFR 15.4	AMASE I-MFR 11.8	OSSAJ I-MFR 9.6	PUMIE I-MFR 5.8	JILOK I-MFR 1.6	OED R-160
7000	5700	4600	3900	*2660		*LOC only.
GS 3.00° TCH 58			3900			

NW-1, 12 SEP 2019 to 10 OCT 2019

NW-1, 12 SEP 2019 to 10 OCT 2019