

LOC/DME I-MFR 110.3 Chan 40	APP CRS 323°	Rwy Idg TDZE Apt Elev 1335	N/A N/A 1335
---	------------------------	--	---

LOC/DME BC-B

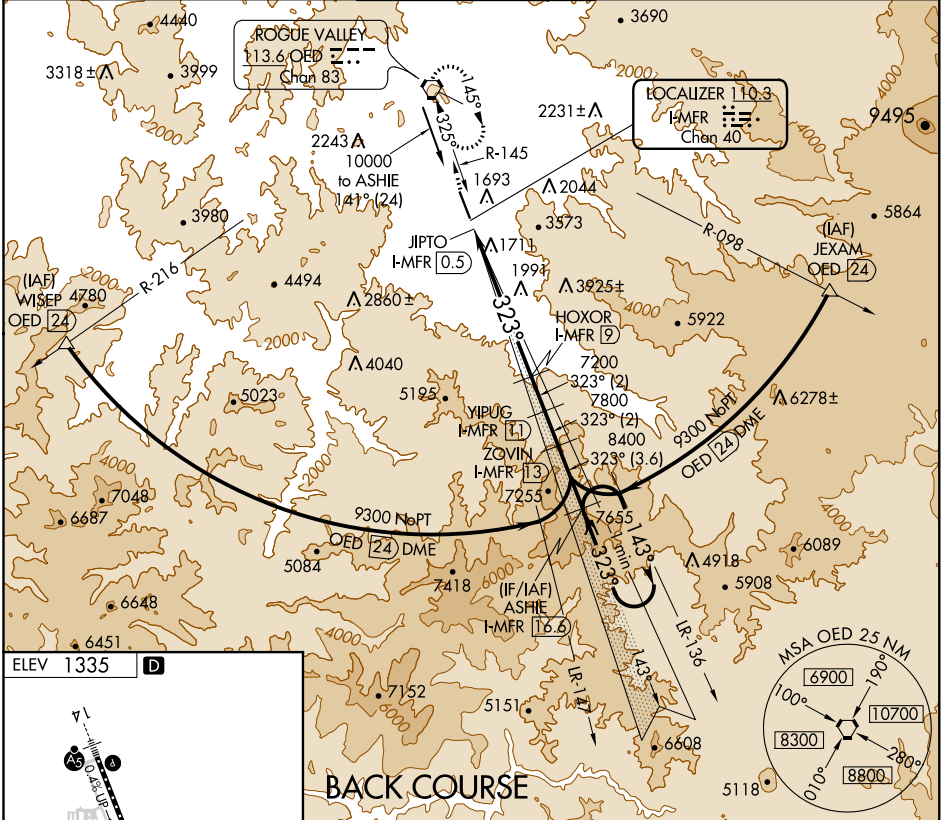
ROGUE VALLEY INTL-MEDFORD (MFR)

Visibility reduction by helicopters NA.

MISSED APPROACH: Climb to 7600 direct OED VORTAC and hold, continue climb-in-hold to 7600.

-5°C

ATIS 127.25	CASCADE APP CON * 124.3 379.9	MEDFORD TOWER * 119.4 (CTAF) 257.8	GND CON 121.8	UNICOM 122.95
-----------------------	---	--	-------------------------	-------------------------



ELEV 1335 **D**

CL Rwy 14-32 **1**

TDZ/CL Rwy 14 **1**

REIL Rwy 32 **1**

HIRL Rwy 14-32 **1**

TWR 1427

1338

384

7600 OED VSGI and descent angles not coincident (VSGI Angle 3.00/TCH 50).

ASHIE I-MFR **16.6** One Minute Holding Pattern

ZOVIN I-MFR **13**

YIPUG I-MFR **11**

HOXOR I-MFR **9**

JIPTO I-MFR **0.5**

Disregard GS indications.

≤ 5.98° TCH 45

143° → 9300

← 323°

8400

7200

7800

Use I-MFR DME when on the localizer course.

CATEGORY	A	B	C	D
CIRCLING	3540-1¼ 2205 (2300-1¼)	3540-1½ 2205 (2300-1½)	3540-3	2205 (2300-3)

NW-1, 12 SEP 2019 to 10 OCT 2019

NW-1, 12 SEP 2019 to 10 OCT 2019