

APP CRS	Rwy Idg	8800
323°	TDZE	1335
	Apt Elev	1335

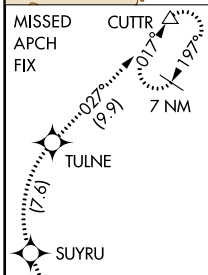
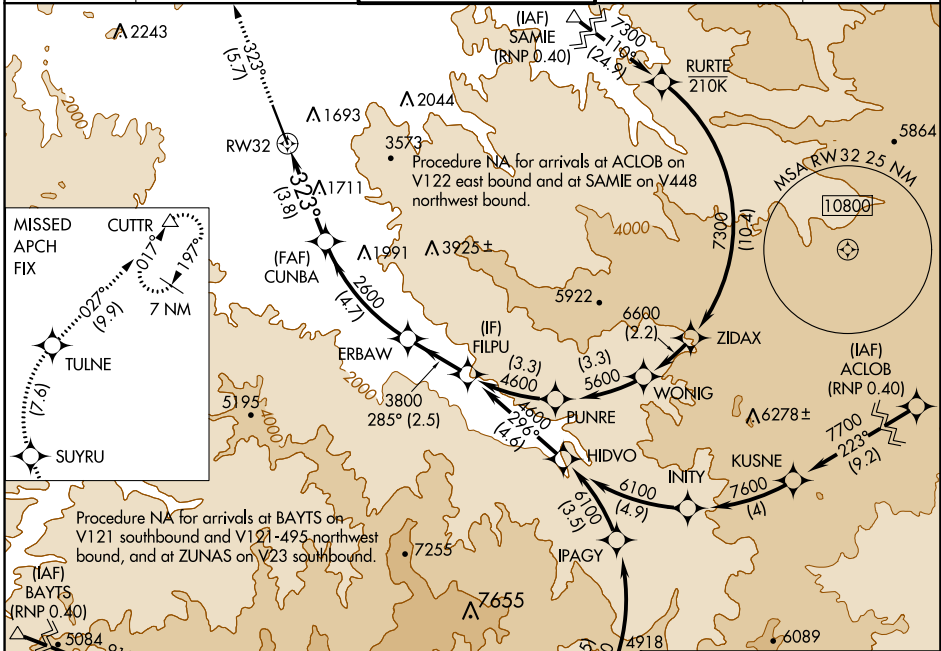
RNAV (RNP) RWY 32

ROGUE VALLEY INTL-MEDFORD (MFR)

GPS required. RF required. For uncompensated Baro-VNAV systems, procedure NA below -8°C (17°F) or above 45°C (113°F).

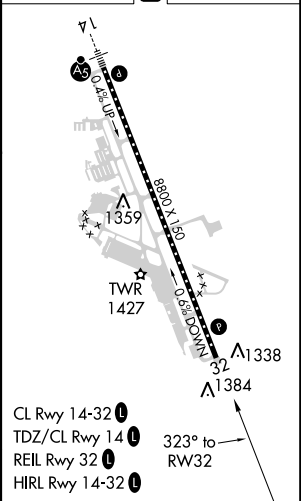
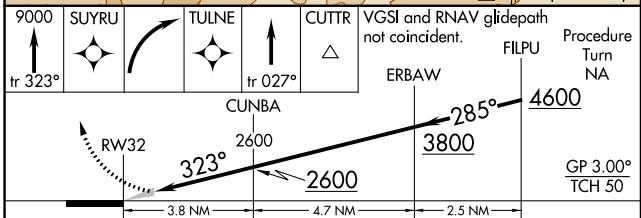
MISSED APPROACH: Climb to 9000 on track 323° to SUYRU, right turn to TULNE, then on track 027° to CUTTR and hold, continue climb-in-hold to 9000.

ATIS 127.25	CASCADE APP CON * 124.3 379.9	MEDFORD TOWER * 119.4 (CTAF) 257.8	GND CON 121.8	UNICOM 122.95
-----------------------	---	--	-------------------------	-------------------------



Procedure NA for arrivals at BAYTS on V121 southbound and V121-495 northwest bound, and at ZUNAS on V23 southbound.

ELEV 1335 TDZE 1335



CATEGORY	A	B	C	D
RNP 0.15 DA		1609-1	274 (300-1)	
RNP 0.30 DA		1661-1	326 (400-1)	

AUTHORIZATION REQUIRED

CL Rwy 14-32
 TDZ/CL Rwy 14
 REIL Rwy 32
 HIRL Rwy 14-32

NW-1, 12 SEP 2019 to 10 OCT 2019

NW-1, 12 SEP 2019 to 10 OCT 2019