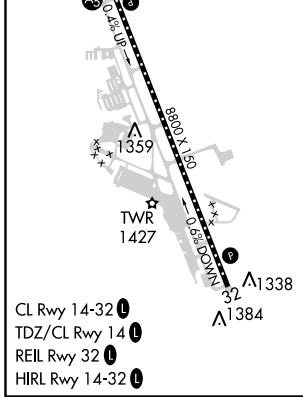
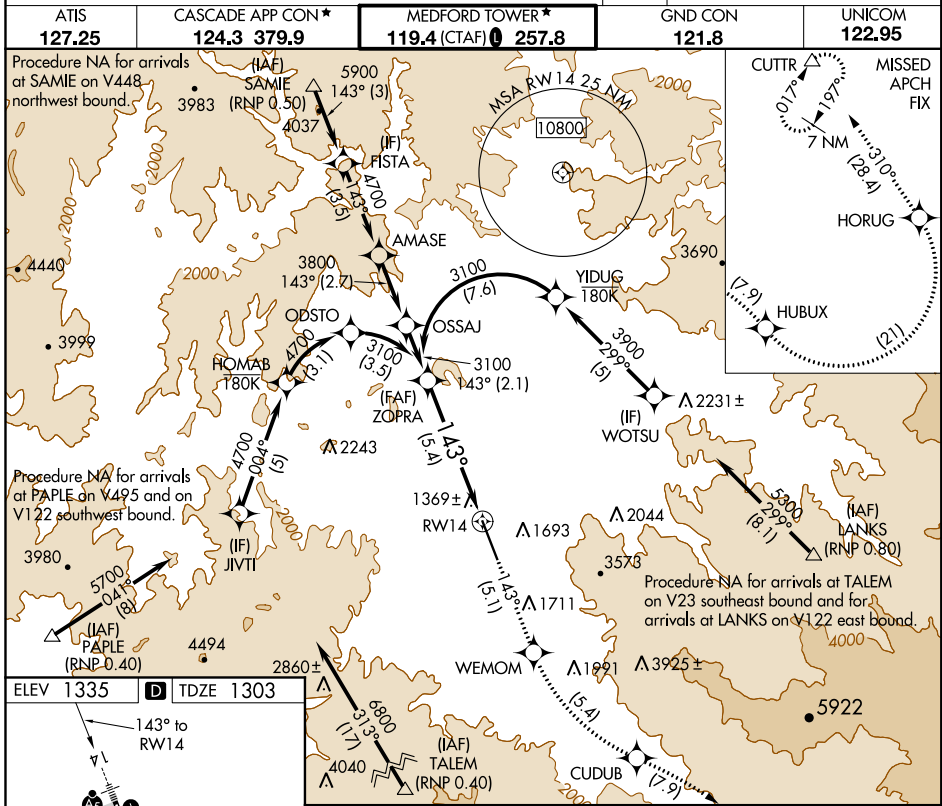


APP CRS <b>143°</b>	Rwy Idg TDZE Apt Elev	<b>8800</b> <b>1303</b> <b>1335</b>
------------------------	-----------------------------	---

# RNAV (RNP) Z RWY 14

ROGUE VALLEY INTL-MEDFORD (MFR)

-5°C GPS required. RF required. For uncompensated Baro-VNAV systems, procedure NA below -8°C (17°F) or above 46°C (115°F). For inop MALSR, increase RNP 0.30 DA* all Cats visibility to RVR 6000, increase RNP 0.30 DA all Cats visibility to 3. * Missed approach requires minimum climb of 259 feet per NM to 8300.	MALSR 	MISSED APPROACH: Climb to 9000 on track 143° to WEMOM, left turn to CUDUB, right turn to HUBUX, left turn to HORUG, then on track 310° to CUTTR and hold.		
	ATIS <b>127.25</b>	CASCADE APP CON* <b>124.3 379.9</b>	MEDFORD TOWER* <b>119.4 (CTAF) 0 257.8</b>	GND CON <b>121.8</b>



ELEV 1335	TDZE 1303
Procedure Turn NA 3100 GP 3.00° TCH 58	9000 tr 143° WEMOM CUDUB VGS1 and RNAV glidepath not coincident (VGS1 Angle 3.00/TCH 73). See planview for multiple IF locations. 5.4 NM

CATEGORY	A	B	C	D
RNP 0.30 DA*		1665/40	362 (400-¾)	
RNP 0.30 DA		2131-2½	828 (800-2½)	

**AUTHORIZATION REQUIRED**

NW-1, 12 SEP 2019 to 10 OCT 2019

NW-1, 12 SEP 2019 to 10 OCT 2019