

**TOP ALTITUDE:
ASSIGNED BY ATC**

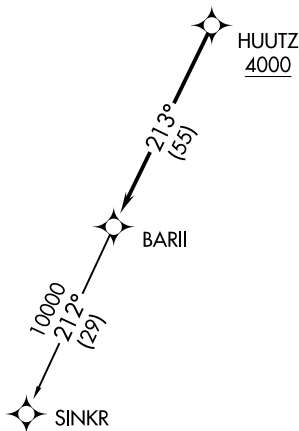
ATIS
 125.325 270.1
 CLNC DEL
 128.3 275.8
 GND CON
 128.3 275.8
 SELFRIDGE TOWER *
 120.15 225.4
 SELFRIDGE DEP CON
 119.6 391.9



TAKEOFF MINIMUMS:

Rwy 1: Standard.
 Rwy 19: Standard with minimum climb
 of 234' per NM to 1500.

NOTE: RNAV 1.
 NOTE: RADAR required.
 NOTE: DME/DME/IRU or GPS required.
 NOTE: Turbojet departures at/above 10000,
 maintain 280K until advised by ATC.



NOTE: Chart not to scale.

DEPARTURE ROUTE DESCRIPTION

TAKEOFF RUNWAY 1: Climb on heading 007° or as assigned for RADAR vectors to cross HUUTZ at or above 4000, thence....
TAKEOFF RUNWAY 19: Climb on heading 187° or as assigned for RADAR vectors to cross HUUTZ at or above 4000, thence....

....on track 213° to BARII, then on (transition). Maintain ATC assigned altitude, expect filed altitude 10 minutes after departure.

SINKR TRANSITION (BARI2.SINKR):