

**TOP ALTITUDE:  
ASSIGNED BY ATC**

ATIS  
125.325 270.1  
CLNC DEL  
128.3 275.8  
GND CON  
128.3 275.8  
SELFRIDGE TOWER \*  
120.15 225.4  
SELFRIDGE DEP CON  
119.6 391.9

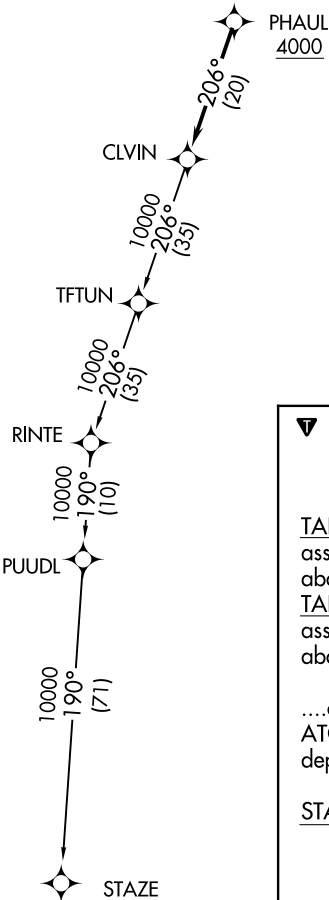


TAKEOFF MINIMUMS:

Rwy 1: Standard.  
Rwy 19: Standard with minimum climb  
of 234' per NM to 1500.

NOTE: RNAV 1.  
NOTE: RADAR required.  
NOTE: DME/DME/IRU or GPS required.  
NOTE: Turbojet departures at/above 10000,  
maintain 280K until advised by ATC.

NOTE: Chart not to scale.



DEPARTURE ROUTE DESCRIPTION

TAKEOFF RUNWAY 1: Climb on heading 007° or as assigned for RADAR vectors to cross PHAUL at or above 4000, thence....

TAKEOFF RUNWAY 19: Climb on heading 187° or as assigned for RADAR vectors to cross PHAUL at or above 4000, thence....

...on track 206° to CLVIN, then on (transition). Maintain ATC assigned altitude, expect filed altitude 10 minutes after departure.

STAZE TRANSITION (CLVIN2.STAZE):

EC-1, 12 SEP 2019 to 10 OCT 2019

EC-1, 12 SEP 2019 to 10 OCT 2019